

Clayton Burkey's Hickory Hill Gardens Daylilies and Singing Canaries

Catalog - \$2.50

E-mail Address – eburkey126@aol.com

<http://pidsweb.org/ClaytonBurkey>

Telephone (814) 886-2823

Canary Information on page 17.

169 Ice Plant Road

PO Box 218

Loretto, PA 15940-0218

Pa. State Inspected

Pa. Department of Agriculture

SPRING 2011-FALL 2011

Calls after dark, please.

SHIPPING INFORMATION, ETC. - PLEASE READ CAREFULLY!

Spring shipments will be made from May 16 - June 6. Late summer/fall orders will be shipped from August 15 - September 6. **Spring Orders received after May 23 will be shipped in August.** Orders are made by mail only with payment included. No orders accepted after August 31. E-Mail orders are not accepted. We no longer ship to other countries, although you may have us ship plants to a US Nursery equipped to handle foreign shipping for you. When ordering, please use the catalog or website order form. Print clearly or type all information. When indicating your preferred shipping date, bear in mind other orders may supersede yours and that weather conditions may necessitate shipping a week earlier or later. We ship by Priority Mail only. Please read the order blank guarantee. When ordering, keep spring and fall orders & shipping charges separate. Pennsylvania customers must pay 6% sales tax. Minimum order for U.S. shipping is \$20.00, excluding shipping costs & tax. No substitutions are made without permission, but including alternate choices for possible substitution helps if we are sold out of a cultivar. Gift Plants are given IF: A) We are given permission to substitute when sold out. B) The mail order exceeds \$35.00. C) A Bonus is requested. D) An ample list of alternate/substitution choices is given. Gift plants our choice, but we may be able to pick from your alternates. Peak bloom season is mid-July - mid-August. We encourage customers to make garden visits by appointment. This results in greater customer satisfaction. Appointments can be made by phone, e-mail, or mail.

PLEASE DO NOT CHANGE YOUR ORDER ONCE IT IS PROCESSED!!

NOTE THAT BUD COUNTS IN THIS ZONE ON THIS MOUNTAIN ARE USUALLY LOWER THAN ELSEWHERE.

Prices are net on all introductions. No extras on introductions.

INTRODUCTIONS FOR 2011

GUNNISON CANYON – #2007-3 – Parentage lost. Dor.dip.M.38”8”, Purple or Plum purple Unusual Form Quilled Crispate with green-yellow throat. 5-way branching. BC=22. Fall Delivery.....\$100.00 each

IF IT WEREN'T FOR NED - # 2006-3 – (TALON x Sdlg.) Dor.dip.M. 35” 7” 3-way branching. BC=15. Standout dark reddish purple Unusual Form Variable Crispate. Sepals usually quill dramatically, but they may also quill and/or twirl beautifully, exposing white edging. Petals may simply open flat, or they may also pinch. Named for my good friend Ned Roberts, a great man and great hybridizer. Our visits, daylily chats, & phone conversations are still greatly missed. If it weren't for Ned, so many would not have access to such great daylily genes nor would we have the tremendous daylily knowledge he so willingly shared with all of us. He exemplified and stressed truth in introduction material for all hybridizers.....Fall Delivery.....\$150.00 each

JUST A BIT CRABBY - #2007-15 – DANCING CRAB x Sdlg.) Dor.dip.M.43”, 9”, Light orange with red veining, and green throat. 4/5 way branching, BC=27. Ratio = 4.8/1, 5/1. Fertile both ways.....Fall Delivery.....\$150.00 each

LOCH NESS SPRING - # 2007-71 – (PRAGUE SPRING X LOCH NESS MONSTER) – Dor.dip. M.36”7”Lovely pink Quilled and Pinched Crispate with standout carmine band and veining. 3-way branching, BC=15 here.....Fall Delivery.....\$100.00 each

NAVAJO BUTTERFLY – 2004-35 – [(WUTHERING HEIGHTS X CAPULINA) X KIRSTEN'S CORSAGE] Dor. Dip. M. 32”7” A favorite here, NB is a pale pink UF Cascade with a strong green throat and smashing Navajo design-like eyezone. 3-way branching, BC=18 Fall Delivery.....\$125.00 each

INTRODUCTIONS FOR 2010

BRONCO BILL - # 2004-24 – (Wuthering Heights x Talon) – Dormant, Diploid, M.36” 6.5”, 3-way, BC=15. Dark reddish mahogany with small chartreuse yellow throat that polytepals 30% or more of the time when established, sometimes with 8 segments and sometimes with 10 segments. Sometimes a Pinched Crispate or will throw petals like talon.....Fall Delivery.....\$100.00 each

GARY D. BALL - # 2005-6 - [(Starman's Fantasy x Lola Branham) x Medusa's Glance] Dormant, diploid. ML.49”-62” 7”. Tangerine Pink UF Twisting Cascade with striking red eyezone and yellow turning to deep green throat. This very tall diploid with strong scapes is named after a dear friend of Sophia and mine, who is a great volunteer and worker for AHS Region III Activities. It is fertile both ways but not as easy as a pod parent.....Fall Delivery.....\$100.00 each

CRY OF THE LOON - # 2006-4 (? X ?) - Dormant, diploid,M. 29”, 8.5”, 3-way, BC=12, R=5.5/1.25 = 4.4/1, (Parentage lost) Light lavender spider with light purple eyezone and bright green throat.....Fall Delivery.....\$100.00 each

STALLACTITE - # 2004-37 – (Desert Icicle x Cerulean Star) – Dormant, diploid,ML.37” 9”, 4-way, BC=15, UF Quilled Crispate, Light pink bitone with yellow tinged pink sepals, darker pink halo band and green throat. Sepals quill on this one while petals twirl, and/or roll. Often a variable Crispate.....Fall Delivery.....\$100.00 each

FELYTA - # 2004-42 – (Trahyta x Fellow) – Dormant, diploid, M.30” 7”, 3-way, BC=15, **Top branched, medium lavender purple** with green throat. This is not a spider, bagel, nor a show flower specifically, but its color is a definite assetFall Delivery.....\$35.00 dbls

LIMEADE CURLING RIBBONS - # 2004-25 – (Lady Hillary x Desert Icicle) –Dormant, diploid, M. 35”-42”, 8”, 4-way, BC=17 , **Very greenish yellow flower w/deep bright green throat radiating out 1/3 of the flower. A UF Cascade w/curling segments.....**\$100.00 each

SCORPION QUEEN - # 2002-78 – [(Greta x Scorpio) x Watchyl Dancing Spider] - Dormant, diploid, ML.39”, 8”, 2-Way, BC=10, R=6.75/1.25=5.4/1 **Large medium yellow, orange tinged spider w/light orange-red halo band. A dramatic looking spider..**\$100.00 each

VENUSIAN FINGERS - # 2004-70 – Sophia’s Magic x Skinwalker) – Dormant, diploid, ML.38” 8”, 3-Way, BC=13, R=7/1&3/8=5.09/1, **Mahogany red very curly spider with radiating green throat and darker eyezone strongest on the petals It is also an Unusual Form Curling Cascade.** This is a sib to MARTIAN FINGERS but slightly more curly, but with a lesser bud count.....Dbl. Fans.....\$75.00

INTRODUCTIONS FOR 2009

FAMILY CREST- # 2004-43 – Dor.dip.M.33”7”, **Handsome light yellow, brushed lavender Unusual Form Twisting Cascade** with a rich & pronounced brushed purple eyezone, especially large and pronounced on the petals. Bright eye-catching Granny Smith apple green throat. 4-way branching, BC=17.....a lovely flower of distinction. (STAR TIDE x Sdlg.).....Double Fans.....\$100.00

GHOST TOWN - # 2002-83 – Dor.dip.M.28” to 40”, 6”-7” Haunting form on this medium yellow **Unusual Form Twisting Crispate** with sepals that often quill and/or curl elaborately reminding one of a ghostly apparition. The throat is Budgerigar green. The flower also has a green cast. Bloom separated, making for a long bloom season. 3/4 way branching, BC=19 (Sdlg. x Sdlg.).....Double Fans.....\$100.00

LOVING LIU – # 99-17 – Dor.dip.M.38” 6.5”-7”, Named for a heroine in Puccini’s “Turandot,” Loving Liu is luscious, rich purple bitone w/a deeper magenta purple eyezone & slightly deeper reddish purple sepals. Often an imposing Pinched Crispate, I did not checklist it that way because it doesn’t pinch consistently. Alluring white midribs enhance the color & the bright light green throat make this a very striking flower. 3-way branching, BC=16 here. (BLUE LUSTRE X SATIN BIRD).....Dbl. Fans.....\$100.00

MARTIAN FINGERS - # 2004-20 – Dor.dip.M.33”6”(Wingspan greater) Purplish garnet **curling Unusual Form Cascade and a Spider** with large green-yellow throat & eye-catching light midribs on all segments. When the segments curl extravagantly, the flower seems to dance. 4-way branching, BC=24, Ratio=4.17/1. (SOPHIA’S MAGIC X SKINWALKER).....Dbl. Fans.....\$125.00

SONG OF THE WOOD THRUSH – # 96-36 – Hardy Evergreen. Dip.LM. 44”7” Splashy purple has a very **bright green throat** and white midribs. A great garden subject because of its later bloom season, large flowers, & wide petals. Fertile both ways. Quite hardy here. Faster increase further South. 5-way branching, BC=20. Sepals = 2.5” wide(Sdlg. x SILOAM RED VELVET)...Spring/Fall....Dbl. Fans....\$75.00

INTRODUCTIONS FOR 2008

CAPTAIN KEITH HUNT - # 2003-10 – Dor.dip.M.47”-53”, 7” with a wingspan to 10”, 5/6-way branching w/branches on branches. BC=33 here. It’s in the multiple UF Class, a **UF Spatulate Cascade**. It’s a light purplish mauve w/a dashing purple eyezone, & has a very large chartreuse th. Named for our Son-in Law, who in the summer is the Captain of his own very popular sports fishing charter boat in Montauk, NY. [SCARLET SWALLOWTAIL X (GRAPE ICE X LILTING LAVENDER)...**Very Limited**.....Fall Delivery..\$125.00 each

DOROTHY AKRIDGE RESCIGNO - # 2002-10 - Dor.dip.M.43”7” Lovely, greenish yellow cascade type spider with bright green throat, and bronzy red eyezone. Segments curl back nicely towards the tips. Four way branching, Bud Count = 15. Ratio=4.35/1. Named for a deceased dear family friend in Baltimore, MD, who also loved daylilies. (CALICO SPIDER X DECOLORES).....\$100.00 each

KIRSTEN MADELINE HUNT - # 2004-57 - Dor.dip.M.56”, 9.5” Ratio from 4.3/1 to 5.34/1. Exceedingly impressive is this 5-way branched light muted rose spider in a twirling cascade, with a bright rose band, and a smashing green throat that extends out through one third of the segments. Bud count = 20 here. A real winner with magnificent up facing blossoms. Named for our married daughter, Kirsten. [(TALON X CROOKED HOUSE) X BORN YESTERDAY].....Double Fans.....\$100.00

PAUL H. LINK - # 2004-74 - Dor.Tet.M.36”7” Gorgeous, **true bright lavender** with bright green throat. This is a lavender bitone, but the difference is only perceptible up close. 3-4 way branching. BC=17, Color has to be seen to be believed. Difficult pod parent, but pollen quite viable. Named for a dear family friend. Parentage unknown..Spring/Fall Delivery.....Double Fans.....\$100.00

SOPHIA’S MAGIC - #2001-48 - Dor.Dip. M.34” 6”(Wingspan greater) **Brilliant red cascade spider self** w/green throat, turning to yellow as it extends outward. Segments can twist and/or curl towards the end creating a marvelous effect. Ratio = 4.55/1 to 5.28/1. Four way branching. Bud Count = 21. Moderately fertile both ways. Makes smaller fans....(Sdlg. x RED RAIN)..Spring/Fall Delivery...Dbls...\$100.00

INTRODUCTIONS FOR 2007

STARMAN'S FLIGHT - # 2001-26 – Dor.dip.M.36”9” **Splashy reddish purple spider with large dashing green throat & deeper rosy purple band.** Fertile both ways. OK here, but best South of the Mason-Dixon line or in zone 6. This spider is also a UF Cascade. (YABBA DABBA DOO x KINDLY LIGHT) 3-Way, BC= 13 here, does not make large fans.....1 Dbl. Fan.....\$75.00

STARMAN'S GALAXY - # 2001-12 - Dor.Dip.M. 48”-52”10.25”Huge, eye-catching yellow spider w/striking triangular red eyezone. The eye on the sepals is so light that the flower appears banded. The petal band extends almost to the tips, is strongly marked, it zaps one's eye. The throat is gold, but heart is green. This flower is a bitone, but not noticeable at a distance. The ratio can vary from 4.3/1-6/1 here. Three way branching. BC=17. [(STARMAN'S DELIGHT X STARMAN'S FANTASY) X PTERODACTYL EYE].....Dbl. Fans.....\$75.00

TROPIC BIRD - # 2000-46 - Dor.Dip.M.42” 9” This light yellow and light beige rose bitone is a charmer with a rose eyezone that is strong on the petals, weaker on the sepals, which are also brushed very light beige-rose. The flower opens flat. The throat is bright green. Three-way branching. (TYLWYTH TEG X KIRSTEN MADELINE BURKEY).....Double Fans.....\$40.00

WALKING STARFISH - # 2001-73 - Dor.Dip.M. 28”8.5” Rich medium yellow **Unusual Form Quilled Crispate** with a green throat. Most of the segments quill, and they will often twist, twirl, or even bend at the same time creating a “walking effect.” The ratio can vary from non-spider up to 5.94/1 when it quills to the maximum. The effect is show stopping. Two way branching. BC = 12 here. [(WILLIE BELLE X JURASSIC SPIDER) X (KINDLY LIGHT X SCORPIO)].....**Limited**.....Fall Delivery.....\$75.00 each

INTRODUCTIONS FOR 2006

MARY SATKUNAS LIDWELL - # 2003-20 Dor.dip.M.40”7”Intriguing light purplish mauve bitone with startling bold purple band and bright green throat. Branching 4-way, BC=25 (STARMAN'S QUEST X LOLA BRANHAM).....Fall Delivery.....\$75.00 each

MICKY MY BUDDY - # 2001-74 Dor.dip. M.37”7” This is a purple **Unusual Form Variable Crispate**. Sometimes it's a Twisting Crispate & sometimes it's a Curling Cascade. The large throat is a bright light green. Petal midribs are white. 3-way branching. BC =15. Fertile both ways. [LOLA BRANHAM x Sdlg.].....Fall Delivery.....\$75.00 each

WREN IN THE GLEN - # 98-29 Dor.dip.M.45” 5.75”-7” This is a tall greenish rose **Unusual Form Spatulate** when established. A reverse bitone, its sepals are darker rose than the more lightly brushed petals. Sepals can twist, curl, or appear flat. The very bright green throat extends half way out from the center of the flower, providing for a remarkable color contrast. Pollen is fertile, but its pod setting is reluctant. Six to 7-way branching. BC=43 here. [Sdlg. x LOLA BRANHAM].....Double Fans.....\$75.00

SCISSORHANDS - # 98-32 Dor.dip.MLa.34” 7” 5-Way Branching, BC = 22. **This is the first Unusual Form Quilled Crispate here in which all segments quill over 90% of the time under normal conditions**, an astounding & beautiful trait. The **flower is bright rich pink with a tiny green throat and a deep pinkish rose band**. Opening at a 150 degree angle creates an effect of a claw or talon reaching out towards the viewer. **Fertile both ways**. This cultivar does not increase fast in the north. It does proliferate, & these root easily. WILLIE BELLE X JURASSIC SPIDER].....**Very Limited**Fall Delivery.....\$150.00 each

INTRODUCTIONS FOR 2005

AMOROUS AND GLAMOROUS - # 2001-60 Dor.dip.MLa.45” 6” 3-Way Branching, BC = 17, **Lavender rose Unusual Form Variable Crispate** w/deeper purplish rose eyezone. The throat is chartreuse. The form can be Spatulate, Cascade, Quilled, or in combinations of these forms. [(WILLIE BELLE X JURASSIC SPIDER) X HELGA BJORNERUD BURKEY].....Spring/Fall Delivery....Double Fans....\$45.00

BY GOLLY MOLLY - # 2000-5 sev.dip.M.44” 8” 4-Way Branching, BC = 16, **Rosy lavender Unusual Form Variable Crispate** which can Cascade, Pinch, or Twist. The throat is strong chartreuse green. Sepals can also twist at the tips on this variably formed flower. [(SDLG. X LOLA BRANHAM) X ARACHNIDAN TRAP].....Fall Delivery.....Double Fans.....\$45.00 each

CANTICLE OF MARY - # 2000-27.....**Display**

GALA CANTALOUPE FLOAT - # 2000-45 Dor.dip.MLa.32” 7” 3-Way branching, BC=16. **This UF Curling Spatulate is showy.** Without the apple/reddish rose band, it looks like ripe cantaloupe. Lighter sepals make this a **bitone**. **Sepals can curl back/twist, creating movement. Blooms late midseason.** Yellowish gr th. STARMAN'S FANTASY X MEDUSA'S GLANCE.....Double Fans.....\$45.00

SEIZE THE MOMENT - # 2001-38 Dor.dip.MLa.51”6.5” 4-Way Branching, BC = 19. **This classic spider with a ratio of 5.75/1** looks smaller at first, but **extensive curling makes the wingspan much larger. The color is light yellow accented by a pale rose band on the petals.** Tall scapes on this charmer. [SDLG. X WATCHYL DANCING SPIDER].....Fall Delivery.....\$45.00

INTRODUCTIONS FOR 2004

CRIMSON ENIGMA - # 2000-17 dor.dip. MLa.44” 7.5” **Bright velvety crimson** w/a huge yellow throat covering a third of the flower, and turning green in the heart. Its many faces, prevent placement in a definite category. Sometimes it's a UF Pinched Crispate or a highly recurved flower. Petal midribs on **established clumps**, often double and rise, from which appendages or crests extend upwards and to the

side. Cresting can occur on one petal, on two, but when it occurs on all three, it becomes an exotically gorgeous cockscomb. Cresting seems to take place the 2nd year after transplanting. Fertile both ways. Parentage might be [ANDROID X RED RAIN.....Double Fans.....\$30.00

DREAMING BUTTERFLIES - # 95-28 dor.dip.ML.34" 6" Bright light butter yellow self with light green throat, is this charmer in an **Unusual Form Spatulate**, reminding one of hovering butterflies. All segments tend to recurve. Segments are very narrow at the center. 4/5-way branching. BC=24. Fertile both ways. [WAY OUT X SPIDER MIRACLE].....Spring/Fall Delivery.....Double fans.....30.00

LADY IN VELVET - # 97-32 dor.dip.M.27" 9" The color is a bit difficult to describe, but akin to a **reddish magenta blend** with a **huge chartreuse green throat**, and a halo-band of slightly darker reddish magenta. It's an **Unusual Form Cascade**. Large size of flowers create quite an impact.. [STARMAN'S FANTASY X HELGA BJORNERUD BURKEY].....Spring/Fall Delivery.....Dbl. Fans.....\$40.00

WOODLAND SPRITE - # 95-40 dor.diploid. Mla.26" - 30" 7" This ruffled **UF Cascade** is **yellowish cream w/rosy lavender petals and petal edge** & gr. th. The rosy lavender color is more intensified on the petal edges and tips, but the sepals are not as deep in color, making it a bitone. . 2-Way branching. BC=22.[SPANISH FANDANGO X LOLA BRANHAM].....Spring/Fall Delivery.....Double Fans.....\$30.00

INTRODUCTIONS FOR 2003

CROOKED HOUSE - # 98-56 sev.diploid.M.40" - 46" 8" This magnificent **favorite** is an **UF Variable Crispate**. It can be a **Spatulate**, **Twisting Crispate**, etc. Bright golden yellow flowers are bedecked w/ a light blood red band. The throat is yellow-green. Reminiscent of the "crooked man" story. 4-Way Branching. BC=29. **Very unique eye-catching flower.** (MICO X FOL DE ROL) Spring/Fall.Dbls....\$60.00

CURLS AND SWIRLS - # 96-24 dor.dip.M.43"6" **UF Twirling Crispate** in **strong purplish rose** w/slightly darker halo, white midribs on petals, & large green throat, a real curler. [STARMAN'S FANTASY X LOLA BRANHAM].....One Dbl fan.....Fall.....\$50.00

DAPPER FLAPPER - # 96-33 dor.dip.M.37"9" Intriguing is this large bright golden yellow **Unusual Form Spatulate** with a bright green throat which flushes onto the segments. Moderate ruffling. Fertile both ways. 4-way branching. BC=17. [SPIDER WEB X SPIDER MIRACLE].....Spring/Fall Delivery.....Double Fans.....\$35.00

LAVENDER AND SPICE - # 99-1 dor.diploid.M.36"6" Medium purplish lavender w/yel-gr th is this **Unusual Form Pinched Crispate**. Crispation is fixed. 3-way branching. BC=20.[BLUE LUSTRE X MEDUSA'S GLANCE]....Spring/Fall Delivery....Triple Fans.....\$25.00

SAMBA TANTAN - # 96-43 dor.dip.ML.33"8" This **Spider Variant & UF Pinched Crispate** is pinkish lavender. **Actually it's banded bitone**. Petals are light rosy lavender. Sepals are lighter pinkish lavender. The band is darker rosy lavender & the throat is yel-gr. Sepal twirl. Petals pinch. 3-way branching. R=4.4/1 [WILLIE BELLE X JURASSIC SPIDER].....Spring/Fall Delivery.....Dbl. Fans....\$25.00

INTRODUCTIONS FOR 2002

FORGIVENESS - # 97-15 Dor.tet.M.30"6" **A bright & cheery exceptionally beautiful deep rose pink color of great clarity that has to be seen with the naked eye to be appreciated for its exceptional beauty & unusual color clarity.** The throat is green-yellow. BC=17. Fertile both ways. Parentage unknown.....Spring/Fall Delivery.....Double Fans....\$40.00

LIGHTNING BIRD - # 98-36 – Dor.tet.M.36"5.5" An advanced step in my line of **fiery red-oranges w/electric azalea color. Absolutely brilliant, & blazing** at a distance, it has deep red veining, a moderately darker halo, & gr th. Fertile both ways. 5-way branching. BC=21. Lightly ruffled. [FLAMING FIREBIRD X PRIME MINISTER].....Spring/Fall Delivery.....Double Fans\$40.00

MYSTICAL ENCHANTRESS - # 96-17 – dor.dip.M.40"9.5" A crimson bitone spider w/faintly darker halo. The sepals are yellow brushed crimson. A huge yellow th, and much yellow in the sepals sets this flower off. Petals & sepals curve back w/grace at the tips,. Fertile both ways. Ratio=4.8/1 Three-way branching. BC=16+. [STARMAN'S DELIGHT X STARMAN'S FANTASY]....Dbl. Fans.....\$40.00

ROMERO'S SOMBRERO - # 96-64 – Sev.dip.M.58"8" It's a nearly 5 foot tall daylily exotic looks spidery. It's a light pink bitone w/a dashing purplish red band & yel-gr th. Attracts attention due to its height and striking color combination. The palest pink sepals are brushed w/the same purplish red in the band. BC=16. [(ARIADNE X LADY NEVA) X JURASSIC SPIDER..Spring/Fall Delivery...Dbl Fans...\$40.00

SCARLET SWALLOWTAIL - # 99-9 – Dor.dip.M.39," 8" - 9," **Bright scarlet is a great color for this large UF Cascade.** The big throat is bright yellow. 3-way branching. You won't miss this commanding red in the garden. [(SPIDER WEB X SPIDER MIRACLE) X (RED FLAG X WUTHERING HEIGHTS)].....Spring/Fall Delivery.....Double Fans.....\$40.00

INTRODUCTIONS FOR 2001

CHIRICAHUA WARRIOR - # 97-8 Sev. Dip. M.40"8" Bright yellow spidery looking exotic w/dynamic burgundy-red chevron band. **Clumps are show stopping.** Fertile both ways. Clumps quickly. (MICO X FOL DE ROL).....Spring/Fall Delivery.....Triple Fans....\$15.00

CHOCOLATE CHERRY TRUFFLE - # 94-56 Hardy ev, tet.M.34" 4.75" **Unusual reddish burgundy and strong brown blend** with a chartreuse th & deeper burgundy brown halo. Petals edged chocolate burgundy, 3-way branching. BC=17. Wide overlap. Good increase. Difficult to photograph the correct color. (CHICAGO APACHE X VINTAGE BORDEAUX....Spring/Fall Delivery...Triple Fans.....\$15.00

EMERALD LADY - # 95-7 Sev.dip. M. 29" 7" This bright yellow Unusual Form often looks spidery or arachnid, but is a lively Twisting Crispate with a large, strong green throat. Most attractive are the ruffled & crinkled segments, evidenced from a distance. Ratio = 3.5/1. Fertile both ways. (FOR PETE'S SAKE X GREEN WIDOW).....Limited.....Spring/Fall Delivery.....Double Fans.....\$20.00

LATELY LOVING YOU - # 95-42 Dor.dip.VL. 31" 8" A **serene Exotic** & a late bloomer (August and September here). The flower is soft, pale beige-lavender, w/a distinctive rose band, & bright chartreuse th. Petals & sepals curl back at the tips, yet the face is fairly flat. Loosely ruffled. 4-way branching. B =24. (FOOLSCAP X ORCHID CORSAGE).....Spring/Fall Delivery.....Double Fans.....\$15.00

PTERODACTYL EYE - # 97-35 Dor.dip. M. 39" 9" Spectacular in appearance, this bicolor has yellow sepals contrasting w/pink-beige petals and a smashing purplish rose band, yel.th. & gr. heart. R=4.2/s to 6.8/1, depending on weather. Fertile. 2-way branching. BC=14. [(ARIADNE X LADY NEVA) X JURASSIC SPIDER]Spring/Fall Delivery.....Double Fans.....\$25.00

INTRODUCTIONS FOR 2000

BIRDWING BUTTERFLY - # 96-9 Dor.Dip. LM.45" 7" An Exotic spidery reddish lavender & yellowish rose bitone. Sepals are yellow brushed rosy lavender. A striking darker rosy purple band on the petals, light midribs, & a gr th provide a splashy color pattern. It is floriferous, and has a long bloom season. BC=28+ here. **Further South, the bud count is 50-70 with 7-8 way branching & a height of 5 feet.** 5-way branching. The ratio is 3.67/1. Fertile both ways. **It was the winner of the prestigious Wente Award at the 2004 Region III Convention.** (RAINBOW SPANGLES X FOL DE ROL).....Spring/Fall Delivery..... Double Fans.....\$25.00

GALACTIC JAUNT - # 90-36 Dor.Dip.LM.29"8.5" Rebloom **Very sprightly looking bright, light yellow spider** with a green throat and a **reblooming tendency.** R=4.8/1. BC=11 on first bloom and 8 on rebloom. Segments curl on warm days and open flatter on cooler days. Fertile both ways. (JERSEY SPIDER X ARACHNE).....Spring/Fall Delivery.....Triple Fans.....\$25.00

KIRSTEN MADELINE BURKEY - # 95-18 Dor.dip.M. 35"10" This huge, awesome, & magnificent spider is a rich crimson red w/a **huge** yellow turning to green throat. R=4.6/1. 3-way branching. Fertile both ways, but reluctant on pods. Marvelous clumps. Blossoms open flat w/a slight recurve towards the ends of the segments, giving the most dramatic appearance I've yet produced. Named for our daughter. (STARMAN'S DELIGHT X STARMAN'S FANTASY).....**Limited**.....Fall Delivery.....Double Fans.....\$30.00

ROBERT ALAN ECKENROD - # 93-6 Dor.dip.M.35"7" This is an **UF Pinched Crispate** w/lavender mauve pinched petals & curled back sepals. The striking eye is rosy purple eyezone, w/lighter ribs, & a yel-gr th. 3-way branching. Named for our friend & creator of my website. Fertile both ways. (STARMAN'S QUEST X LAKE NORMAN SPIDER).....Spring/Fall Delivery.....Double Fans.....\$25.00

STARMAN'S DELIGHT - # 89-41 Dor.dip.M.28"8" (Wingspan to 12") **Bright yellow classic spider w/green throat.** Segments can be straight or twirl. **Fertile both ways.** BC=15. 5-way branching. R=5.33/1. Closure = 1.25. This one has given me 3 introductions. Fertile both ways & **it frequently gives up its color.** (JERSEY SPIDER X ARACHNE).....Spring/Fall Delivery.....Triple Fans.....\$20.00

STARMAN'S DREAM - 96-35 Dor.dip.EM.21"7" **Dark crimson classic spider** w/large yellow gr. th. R=5.26/1. This serene flower is narrow spider. Makes smaller fans.(STARMAN'S DELIGHT X STARMAN'S FANTASY)....Spring/Fall Delivery....Triple Fans.....\$20.00

STARTIDE - # 94-51 Dor.dip.LM.37"6.5" **Voluptuous dark purple w/large yellow hexagram throat,** green heart, & white midribs. Spidery. Segments curl back. Slightly darker purple band on the petals. BC=23. 7-way branching. (STARMAN'S QUEST X FOL DE ROL).....Spring/Fall Delivery.....Triple Fans.....\$20.00

1999 INTRODUCTIONS

DANCING CRAB - # 92-11 Dor.dip.M.42"6" Light scarlet **Unusual Form Cascade** w/**deep bright green throat** and lovely curling segments. 5-way branching. BC=21. Ratio = 3.82/1 A lovely and exotic eye catcher that garden visitors have long admired. Fertile both ways. (SCARLET GOWN X RED THRILL). **AHS Honorable Mention Award in 2008.**.....Spring/Fall Delivery.....Double Fans.....\$25.00

FLAMING FIREBIRD - # 95-47 Dor.tet.44"6"LM.RE.Deep, bright, and **fiery tangerine-orange-scarlet blend** with darker, dim halo and green throat. The dark red veining gives the fiery look. Overlapped & ruffled. 4/5 way branching. BC=21. Fertile both ways. (CHICAGO APACHE X WOUNDED HEART) This cultivar has a reblooming tendency here.....Spring/Fall Delivery.....Double Fans.....\$25.00

HELGA BJORNERUD BURKEY - dor.dip.LM.41"7" Voluptuous purple Unusual Form Cascade with huge green throat, and darker halo. 4-5 way branching and a BC = 23. Long bloom season. Fertile both ways, HM.....Very Limited....1 Dbl. Fan...\$50.00 - fall

TURANDOT'S TIARA - # 95-43 - Sev.dip.40"8"LM. Lively, **dramatic looking,** very **light rosy-tan & bright yellow bicolor spider.** R=4/1, though it may be a bit less after heavy rain. The huge bright yellow throat is colored like the sepals. The halo-band is purplish-rose & wedge-shaped...very **striking effect.** All segments curl back at their tips. 2-3 way branching. A difficult pod parent, but its pollen will take on some cultivars. Makes smaller fans. (Unknown x FOL DE ROL) ? likely SPIDER MIRACLE.....Fall Delivery....Double fans.....\$20.00

PREVIOUS INTRODUCTIONS

ANDROID – Burkey, '97, Sev. dip. M. 42" 7.5. **HM, Dark burgundy purple classic spider** w/huge Chart. th. **Ratio=5.9/1...** Dbl. Fans. \$25.00
ARACHNIDAN TRAP – Burkey, '95, Dor. Dip. 37" 9" **EM. Gorgeous, strong lavender UF Variable Crispate** w/large yellow throat extending 1/3rd out forming a 6 pointed star. Quilled sepals give the arachnid look. BC=17..... 15.00
AUGUST EIGHTY-THREE – Burkey '88, Dor. tet. LM. 36" 6" -7" **Golden yellow**, w/gr th, Late in cool summers, BC=28..... 8.00 - quads
CHEERFUL THOUGHT – Burkey, '88, Sev. tet. EE. RE. 25" 5" **Bright, gold-yellow** w/gold-orange th, 4-way branching. BC=21.... 8.00-quads
DARBY'S MYSTIQUE – Burkey, '98, Dor. dip. 40" 8" **M. RE. Striking light yellow Spider & gr. th. Reliable repeat**, R=4.8/1..... 15.00 - quads
DOROTHY BURKEY CONRAD – Burkey, '95, Hardy Ev. Tet. 26" 6" **M. Brilliant, gold flower with smashing, large red eyezone** and green throat. . 4/5 way branching B.C=27. **2005 Wente Award winner**..... 15.00 - triples
ELFIN DAYDREAM - Burkey, '96, dor. dip. M. 37" 7" Rich light lavender with huge chartreuse th, Serene & dreamy..... 20.00 - fall
FATHER DAVID CRONAUER – Burkey, '92, Dor. tet. M. 29" 6" Deep, rich, opulent, bright red w/dark velvet overlay, gr th..... 9.00 - quads
FATHER JAMES FOSTER – Burkey '91. Dor. tet. MLa. 33" 5.5" **Dark, lustrous, ruffled deep red w/ dark velvety overlay finish.**
Electric red sheen shimmers between inner flower & gr. th. Eye-catching. Quick shedding. 3-way branching. BC=16..... 9.00 - quads
GODZILLA – Burkey, '88, dor. tet. M. 36" 8" **Huge spidery orange-red** w/yellow ribs, yellow throat extends out, gr. heart... 10.00 – SF/fall
HER FLIRTATIOUS EYE – Burkey, '93 Hardy Evergreen, tet. M. 36" 6" Lightly ruffled, **bright**, light burnt orange flower w/ a **dashing**, dark red eye, green throat, & long bloom season. **BC to 50. 5/9-way branching. Good increase**..... \$8.00 - triples
JURASSIC SPIDER – Burkey, '94 Dor. dip. 32" 10" + fr. M. **Huge, light rosy-mauve, & chartreuse bitone** w/rose-purple band,..... 20.00
KIRSTEN MY LOVE – Burkey, '88, Dor. tet. RE. 32" 40" ,8" -9" , **Big, bold, splashy golden yellow** w/gr. heart. BC=21. Large fans..... 10.00
KIRSTEN'S CORSAGE – Burkey, '97 Dor. dip. ML. 37" 7" **AHS HM.** Vivacious, rosy purple **UF Cascade** w/huge chartreuse th & smashing, magenta eyezone. that looks spidery because its petals are narrow at the center of the flower 4-way, BC=20..... Dbl. Fans..... \$20.00
LAVENDER VEIL Burkey '89- Dor. dip. M. 30" 6" Wide, **warm lavender** w/small yel-chartreuse th. White ribs. Fast increase..... 8.00-triples
LITTLE RED SPIDER - Branham-Burkey, '86, dor. dip. M. 28" 5" Dark ruby spidery w/gr heart. **Sparkling jewel**..... 8.00-fall
LOLA BRANHAM – Burkey, '92 **UF Twisting Crispate Cascade lavender and cream reverse bitone and green throat**..... 15.00 - fall
LAURA ABDALLAH - Burkey, '95 Dor. Dip. 26" 2.5" ML. Lovely, ruffled, mini. rose w/**striking**, purple eye & deep gr th. BC=30... 9.00-quads
LOURICE ABDALLAH - Burkey, '95, Dor. Dip. 30" 5" **EM, Beautiful pink** w/chart. th. **Long bloom season. Flowers upface**..... 9.00- triples
MADLINE HEEDEN ABDALLAH – Burkey, '96, Dor. Tet. M. 24" 6" **Gorgeous, ruffled, deep rose pink self**, gr. heart..... 10.00 - triples
MAGNIFICENT EYES - Branham-Burkey, '86, dor. dip. LM. 26" 5.75" Light yellow w/maroon eyezone, gr. heart. BC=22..... 7.00 - triples
MEDUSA'S GLANCE **Display**
MISS PENNSYLVANIA – Burkey, '89, Hardy Ev. tet. EE. RE. 28" 6" **Peach-pink polychrome bitone w/yellow wash & gr th**..... 8.00 - quads
MONTERRAT'S REVENGE - Burkey, '98, Sev. tet. 21" 5" **M. Fiery orange red blend** w/green heart, ribs purplish red..... 10.00 - triples
MY VALENTINE'S SECRET – Burkey '88, Dor. dip. M. 28" 6.5" **Creamy white-greenish-beige w/startling rosy purple eye**.... 7.00 - triples
PHOEBE HINES LINK - Burkey, '96. Dor. Tet. M. 36" 6" **Light purple & light lavender banded bitone**, light wtmk, gr heart... 10.00-triples
RED BUTTERFLY – Burkey, '96 Dor. Tet. LM. 38" 6" **Very bright red tailored** flower w/green throat. BC=25..... 10.00 - quads
SOPHIA ANNE BURKEY – Burkey, '91, sev. dip. RE. EM. 27" 5.5" Rich light beige pink w/sultry rose-pink eye, gr. th..... 15.00 - fall
SNOWY NIGHT - Burkey, '96 Dormant. Dip. M. 22" 5" **Lovely, near white w/lemon highlights & deep green heart**. BC = 16... 8.00 – quads
STARMAN'S FANTASY- Burkey, '94 Dor. dip. M. 30" 8. **Rich bright burgundy red UF Variable Crispate** w/huge chartreuse throat.. 20.00
STARMAN' GIFT – Burkey, '89, dor. dip. M. 27" 6" **Good white self** with tiny green-yellow throat, long bloom season, BC= to 36..... 10.00
STARMAN'S JOURNEY – Burkey, '88, Dor. tet. ML. 37" 9" **Huge bright yellow, bold & splashy**..... 9.00
STARMAN'S VOYAGE Burkey, '98. Dor. dip. M. 41" 9" Huge, lavender purple **UF Variable Crispate w/rosy highlights**, gr. th..... \$20.00
STARMAN'S QUEST..... **Display**
SULTAN'S EXPRESSION – Burkey, '88, Dor. dip. M. 25" 5.5" **Nicely rfl. golden-yellow** w/gr th, **long bloom season**, BC 17..... Quads.. 8.00
WEB OF ANDROMEDA – Burkey '91 Dor. dip. MLa. Re. fr. 36" 7" Yellow **spidery Exotic Form** w/tiny green throat, and **long bloom season**. Flowers up-face. **Reliable rebloom**. Bud count=23. 3-way branching..... Triples..... 10.00

GENERAL LISTING

AABACHEE - Cheetham, '65I, Hard dor. dip. ML. 32" 8" Huge deep **mahogany red** Classic Spider w/white margins, R = 7.5/1..... 8.00 - triples
AFTER AWHILE CROCODILE - Reed, '97R, sev. dip. ext. **Very Late. 28" 5.5" Beautiful light rose** w/white midribs & lemon th, a must for every collection, it blooms after almost all of the others are gone..... 15.00 - fall
AHOYA - Gabrielson, '65, dor. dip. ext. M. 28" 6" **Splashy** garnet red w/strong yellow star gold th, white ribs, **gorgeous clumps**.. 8.00-triples
ALIEN - Belcher, '87, dor. dip. fr. ext. EM. 23" 6.5" Light yellow w/gr th, **UF Variable Crispate** w/twisted segments, most unusual.... 8.00 - quads
ALWAYS AFTERNOON - Morse, '89, sev. tet. E. RE. ext. 22" 5.5" **Gorgeous** lavender-mauve w/purple eyezone & gr th, hardy..... 8.00-triples
AMBER PALACE – Reckamp, '72, dor. tet. M. 28" 7" Full flat, gorgeous amber-orange, a favorite..... Singles... 7.00 – fall
APACHE TEARS, - Hall, '69, dor. dip. M. 30" 5.5" Warm shade of light brown overlaid rich yellow gold, a favorite..... 6.00 - fall
APOLODORUS - Munson, '85, sev. tet. MLa. RE. 28" 4.5" **Beautiful violet purple** self w/cream yellow throat, good increaser..... 7.00 – triples
ARACHNE – Schroer, '55, ev. dip. RE. 41" 7" long blooming ornate golden yellow, aptly named, Ratio=5.8/1..... Singles..... 7.00 - fall
ARCTIC SNOW - Stamile, '86, dor. tet. ext. M. 23" 5.5" Lively and pretty ivory white self with green throat, nice near white..... 8.00 - quads
ASIATIC PHEASANT - Kowner, '73R, dor. dip. ext. M. 22" 6" **Spidery looking curly UF Cascade** in yellow w/gr-yel th. (R=3.6/1).. 8.00 - fall
ASTERISK - Lambert, '85R, sev. dip. M. 28" 8" Magnificent **Unusual Form Spatulate** in grayish white w/green throat, **great**..... 15.00
ATHLONE - Russell, '42, ev. dip. 48" 5" M. RE. Crispate spidery bicolor w/pinched orange petals, yel. midribs & sepals, historic.... 7.00 – clumps
AVON CRYSTAL ROSE - Moldovan, '82, dor. tet. M. 26" 5.5" **Lovely rose pink** w/white wtmk and small gr-yel th, **very good** 8.00 - quads
AQUAMARINE – Lambert, '83, Hard. dor. dip. fr. noc. EM. 28" 7" Exotic, light lavender blue bitone with green throat..... 8.00 - fall
BAMBOO RUFFLES - Durio, '89, ev. tet. ext. M. RE. 26" 6" Bright yellow brushed gold & rust w/rosy red eye rouging, deep gr th..... 6.00 - quads
BANANA PEPPER SPIDER – Herrington, '98i, Sev. dip. EM. RE. 44" 8" Deep yellow spider with vivid gr th. R=4.11/1..... 15.00 - fall

BARBARA MITCHELL - Pierce,'85,sev.dip.M.RE.20"6"**Lovely light pink** self w/green throat, **nicely ruffled, CHOICE**.....8.00 – quads

BARK AT ME – Roberts,'99,sev.dip.M.38"7"**Light purple UF Crispate** with darker purple eye & chartreuse throat, excellent..20.00 - fall

BAT SIGNAL - Reed,'96,sev.dip.EM.52"6"**Dramatic Spidery cream w/dashing purple eyezone, often a pinched crispate**.....12.00-triples

“Becky’s Script” - Branham Sdlg.Dor.dip.28"4.5"**Good red** w/twirling segment or 2, reminiscent of shorthand.....8.00

BEE’S BETTY SUE – Downie,'96,dor.dip.M.fr.24"5.5"**Crested pink w/light lavender halo & yel-gr. th**..... 10.00 - fall

BEL AIR DAWN - Salter,'91,sev.tet.MLa.RE.28"5.5"**Very good nicely colored pink** self with a green throat.....8.00 - quads

BELA LAGOSI – Hanson,C.'95R,sev.tet.M.33"6"**Outstanding deep purple with velvet finish** and green throat, great color....12.00 - fall

BENGAL TIGER - Copp,'67,dor.dip.ML.40"6"**Striking orange w/copper overlay, speckled & stippled, great clumps**.....8.00

BIG APPLE - Sellers,'87,sev.dip.EM.26"5.5"**Wide, full flowered, stunning cerise red self with green throat,** ruffled segments...7.00 - quads

BLACK ARROWHEAD - N.Roberts,'02.sev.dip.M.noc.34"7.5"**Light mauve-purple spider w/dark purple eye, gr. Th,R=4.11/1**...20.00 - fall

BLACKBERRY CANDY - Stamile,'92,dor.tet.ext.25"4"fr.M.RE.**Bright gold with smashing black eyezone, a showstopper**...7.00 – triples

BLACK EYE – Goldner,'84,dor.tet.M.30"5"**Lavender pink with dark purplish eyezone** and green throat, **striking**.....9.00 - fall

BLACK EYED SUSAN - Stevens,'87,dor.tet.M.26"5.5"**Deep bright butter yellow w/striking deep reddish purple eyezone**.....6.00 - quads

BLACK ICE – N. Roberts,'2000R,sev.dip.M.32"7.5"noc.**Vibrant blackish spider** w/yellow green throat, R=4.3/1.....20.00 - fall

BLACK PLUSH - Connell,'56,sev.dip.M.32"6"**Velvety red-black self, striking spider variant with great color,** R = 4.8/1.....8.00 - triples

BLACK WATCH - Barrere,'78,dor.tet.ext.FR.EM.25"7"**Elegant burgundy black purple self** with yel-gr. th....**good form**.....6.00 - quads

BLOODLINE - Millikan,'88,dor.tet.MLa.27"5"ext.**Round, sunfast, scarlet red** and yellow-green throat, **an excellent red**.....7.00 - quads

BLUEBERRY BREAKFAST – Rose,'88,dor.dip.MI22"5"**Slate lavender w/magenta purple ribs, deep purple eyezone,** gr. th...15.00

BLUE EYED BUTTERFLY – Lambertson,'96R,sev.tet.ext.EM.24"5.5"**Gorgeous near white with remarkable bluish eyezone**.....15.00

BLUE PRELUDE – Childs,'76,dor.dip.M.RE.28"6.5"**Bluish lavender self** with lemon throat.....7.00

BLUE SHEEN - Kennedy,'65,dor.dip.M.RE.20"4"**Medium bluish lavender w/large gr-yel th, reblooms 2/3rds of summer**.....6.00 - quads

BOB WHITE - Peck,'84,dor.tet.M.24"6"**Very good near white with green throat,** makes a good show here.....8.00-triples

BOLD ONE - Lenington,'68,sev.dip.M.40"7"**Bright gold w/smashing wine-purple eyezone, opens flat, makes a statement**.....6.00

BORN YESTERDAY - Lambert,'72R,dor.dip.ext.noc.EM.28"6.5"**Creamy UF Variable Crispate dusted rose,** w/red halo.....20.00 - fall

BRASSTOWN - Lambert,'70,dor.dip.E.RE.26"5"**Raspberry &cream bicolor w/gr th, makes a statement.** Much movement....9.00 - triples

BRAZILIA - Sellers,'78,dor.tet.M.28"7"**Flashy, huge, deep red self** with yellow throat, stays low, a **showy flower**.....7.00 - quads

BRER RABBIT’S BABY - N. Roberts,'02R,sev.dip.M.fr. Noc.30"5"**Blackish red UF Twisting Spatulate** w/green throat.....15.00

BRIGHT SIDE - Kennedy,'81,dor.dip.M.21"6"**Very bright, fiery red blend w/olive-yel th, petals, NICE,** makes smaller plants..7.00

BRUCE - Pride,'76,dor.tet.ML.38"5"**Bright orange-red blend w/gold-orange throat. Fiery in color, makes huge fans**.....7.00 - quads

BUENOS AIRES - Munson,'90,sev.tet.EM.RE.32"6"**Bright and deep rose pink** w/yellow & chalky rose eyezone & gr th.....8.00

CALICO SPIDER - Crandall,'94,Hardy ev.dip.M.32"6.75"**Spidery gold with brown-mahogany eyezone, stunning,** scarce.....9.00

CALIFORNIA SUNSHINE - Chesnik,'86,sev.tet.EM.Re.33"6.5"**Ruffled, wide, intense yellow elegant showstopper,** a favorite...7.00-triples

CAMEROONS - Munson,'88,sev.tet.M.RE.28"5"**Claret red self** w/yellow green th, **gorgeous color, parent of tet Ufo’s**.....8.00-triples

CAPTAIN NEMO – Schwarz,'01R,dor.tet.MLa.35"5"**Gorgeous grape jelly purple w/gr th. UF Variable Crispate, BC=25**....25.00 - fall

CARAMBA - Bryant,'85,dor.dip.fr.M.24"8"**Unusual looking long petaled coral apricot, very nice**.....7.00 - triples

CARNIVAL IN RIO - McEwen,'80R,dor.tet.ext.M.30"6.5"**Flamboyant, bright orange-apricot exotic, lavender ribs,** orange th..8.00

CARNIVAL IN VENICE - Lambert,'66,dor.dip.ext.fr.MLa.28"6"**Raspberry blend petals & citronella sepals** and green th.....10.00

CAROLICOLOSSAL - Powell,'69,sev.dip.E.36"10"**Huge, splashy deep yellow spidery type,** will set pods.....8.00

CAROLINA CRANBERRY - Kennedy,'80,dor.dip.M.20"5"**VIBRANT cranberry-red w/deeper eye, gr. heart, great color**.....7.00 - quads

CARRICK WILDON - Goldner,'87R,dor.tet.ext.MLa.34"7.5",**SMASHING, huge yellow-red blend w/orange tips & yellow th**...15.00

CASTLE CAMELOT - Moldovan,'99I,sev.tet.E.Re.36"6"**Outstanding rose pink blend** with yellow turning to green throat.....15.00

CASTLE PINKNEY - E.Shooter,'01R,dor.dip.M.RE.Fr.38"7.5"**Bright rose w/rose pink edge,** cream chartreuse throat.....15.00

CELEBRATION OF ANGELS - Trimmer,'99,sev.tet.fr.E.RE.25"4.75"**Lovely cream w/smashing black purple eyezone, gr. th**...15.00 - triples

CERULEAN STAR - Lambert,'85,dor.dip.noc.RE/EM.32"7"**Spectacular bluish lavender Unusual Form** w/gr. star th.....15.00

CHALLENGER - Stout,'49,sev.dip.M.RE.ext.48"5"**Medium red, tall and graceful, hardy Altissima hybrid,** good increase.....7.00 - quads

CHARLES JOHNSTON - Gates,'83,sev.tet.EM.RE.fr.24"6"**Lovely cherry red** with green throat, ruffled, **vibrant color**.....8.00 - quads

CHARLOTTE RHAME – Rhame,'73,dor.dip.EM.28"8.25"**Pinkish white w/striking raspberry red eye,** a great oldie.....8.00

CHARMING SPIDER - Offer,'73,dor.dip.ext.MLa.26"7"**Salmon pink blend Unusual Form Pinched Crispate** w/green th....8.00 – triples

CHERRY CHEEKS - Peck,'69,dor.tet.ML.**Bright and deep rose pink** with distinctive color, **sells on sight**.....8.00

CHERRY CHIN - Peck,'73,dor.tet.M.31"7"**Very bright, distinctive beautiful reddish rose** with flat, widespread form, **BTFL**.....8.00

CHESAPEAKE CRABLEGS - Reed,'95,dor.dip.fr.ext.EM.RE.38"6.5"**Bright crab-orange spider** w/reddish eye, gr th, R=4/1...8.00 - quads

CHICAGO APACHE - Marsh-Klehm,'81,dor.tet.LM.RE.27"5"**Rfl. scarlet-red self** with green throat, **blooms late here**.....7.00 - quads

CHICAGO CATTLEYA - Marsh-Klehm,'82,dor.tet.M.24"5.75"**Elegant, gorgeous, ivory lavender** w/deep purple halo eyezone....9.00

CHICAGO DAWN - Marsh,'74,sev.tet.M.22"5.5"**Very pretty, serene white, nicely brushed light lavender,** good bud count.....6.00 - quads

CHICAGO RUBY - Marsh,'78,sev.tet.27"6"**M.Ruffled, rich dark ruby self w/gr th, a heavy bloomer, EXCELLENT**.....8.00 - quads

CHIEF FOUR FINGERS – Roberts,'03,sev.dip.M.44"6"**Dark reddish purple polytepal(80%) w/blackish band & yel/gr throat**..18.00 - fall

CHORUS LINE - Kirchoff,'83,sev.dip.ext.fr.E.RE.20"3.5"**Lovely, strong pink w/rose band, yellow halo, and a dark gr th**.....6.00 - quads

CHOSEN LOVE - Maxwell,'71,sev.dip.EM.RE.26"6"ext.fr.**Exquisite bright light lavender** with green throat, **lovely**.....5.00

CHRISTMAS ORNAMENT - Peck'92,dor.tet.M.22"5"**Excellent, beautiful, round, recurved bright red self** w/deep gr th.....7.00 - quads

CHRISTMAS RIBBON - Stamile,'91R,dor.tet.E.34"8.5"**Christmas red Unusual Form Spatulate** w/yellow th.....7.00

CLARET SPLENDOR - Childs,'75,dor.tet.E.RE.28"6"**Very bright, showy cherry red w/gr th, beautiful, slower increase**.....8.00 - sf/fall

CLASSIC CAPER - Stevens,'83,dor.tet.M.RE.30"5"**Striking salmon rose w/startling, huge purplish red eyezone**.....6.00 – triples

CLASSY CAST - Brooks,'93,sev.tet.EM.RE.36"5"**Large, waxy coral-rose blend w/gr th, exceptionally pretty, a favorite**.....8.00 - triples

CLAWS - Zahler,'95,sev.dip.M.ext.30"6"**Light yellow UF Crispate w/pinched petals quilled sepals,** and light gr th.....8.00 - triples

CLEMENCEAUX - Munson,'89,sev.tet.EM.RE.26"6"**FR.Elegant,round, pastel cream-yellow-green w/pink highlights. gr th**.....7.00 - quads

CONDILLA - Grooms,'79,dor.dip.EM.20"4.5"**Deep gold double self, a very good and definitive double**.....7.00 - triples
CORAL CRAB - Douglas,'55,sev.dip.32"7"**Classic pink spider with cherry red eye, crinkled petals edges**, Ratio = 5/1.....8.00
CORNWALL - Lambert,'68,dor.dip.fr.ext.28"6"**M.Excellent, SUNFAST deep BRIGHT GOLD self**.....7.00 - triples
COSMIC VISION - Benz,'91,ev.tet.M.fr.28"5.5"**Gorgeous round & ruffled, vibrant rose pink blend w/bright green throat**.....7.00 - quads
COTE D'AZUR - Lambert,'83R,dor.dip.ext.EM.27"6"**Lavender pink w/slightly darker halo & huge gr. th. UF Spatulate**.....12.00
COUNTRY MELODY - Klehm,'89,dor.tet.fr.MI30"5.5"**Gorgeous pink polychrome with soft yellow halo & throat, BTFL**.....8.00 - triples
COURT MAGICIAN - Munson,'88,ev.tet.EM.RE.26"5"**Excellent purple with huge chalky lilac eyezone & yellow green th**.....8.00
CRAZY PIERRE - Whitacre,'90,dor.dip.M.24"7"+M.**Pale orange-peach spider w/red steeple-shaped eye**, Ratio=5/1.....7.00 - fall
CREATURE OF THE NIGHT - Margo Reed,'99R,dor.dip.M.34"7"**Purple spider w/white midribs & cream th**...Rich color...10.00
CRIMSON PIRATE - Sass,'51,dor.dip.ext.M.30"5"**Small Classic cherry red Star Spider**, long blooming, bud builder,[R=5.2:1]...6.00-clumps
CRYSTALLINE ENTITY - Reed,'03,dor.dip.M.ext.36"8"**Superior pink w/rose pink eyezone & gr. th. UF Cascade**.....40.00
CURDS AND WHEY - Dickerson,'91R,dor.dip.ext.25"7"**Mauve spider with purple eyezone and gr th**, Ratio = 4.3/1.....7.00 - quads
DACQUIRI - Hall,'64,dor.dip.M.32"7"**Spidery, pale greenish ivory-yellow w/pink tints, dreamy flower & a favorite**.....6.00 - triples
DAMASCAN VELVET - Munson,'80,dor.tet.MLa.20"6"**Lovely purple with chalky eyezone and cream throat**.....7.00 - triples
DAMSEL IN DISTRESS - Lambert,'89,dor.dip.M.30"7"**Large, gorgeous purple w/creamy green throat, UF**.....20.00 - fall
DANCES WITH GIRAFFES - Reed,'05,dor.dip.MLa.60"8"**Golden yellow w/blush rose-pink eye and gr th, UF Cascade**.....75.00 - fall
DANCING LIONS - Benzinger,'71,dor.tet.EM.28"8"**Strong yellow self Unusual Form Pinched Crispate tet w/olive gr. th**.....7.00-triples
DAN'S TEA PARTY - Tau-Mrak,'94,sev.dip.ext.M.RE.30",6.5"**Lovely, ruffled pale yellowish cream with green throat**.....15.00
DARK AMETHYST - Mercer,'98R,dor.tet.EM.RE.fr.noc.21"5"**Rich, dark purple self with darker ruffled edge & dark purple throat**..8.00
DARK GIFT - Lambert-Whitacre,'98I,dor.dip.noc.ext.EM.34":7.5"**Dark purple UF Quilled & partially Pinched Crispate**.....30.00
DARK STAR - Connell,'53,ev.dip.32"6"**CLASSIC STAR SPIDER, a zesty, pretty purple w/reddish cast & yel th**.R=5:1.....8.00 - triples
DAYDREAM BELIEVER - Petree,'81,Dor.Tet.Ext.M.RE.28"6"**Large, commanding, light yellow w/green throat, very ruffled**.....7.00 - quads
DECOLORES - Temple,'96,ev.dip.E.RE.ext.28"8.5"**Rose, tan, and yellow classic spider w/red-purple eyezone, gr th**, R=6/1.....10.00
DELMAR - Whatley,'86,sev.dip.ext.EM.20"5.5"**fr.noc.Outstanding, lovely medium pink self w/cream ribs/edges, gr th**.....7.00 - triples
DESERT ICICLE - Ned Roberts,'95R,sev.dip.fr.noc.EM.36"8"**Near white UF Curled Cascade w/pinkish blush, gr th, favorite**..15.00
DESIGNER GOWN - Sikes,'83,dor.tet.M.29"6"**Pale pink lavender w/deeper halo and petal edging & gr th, zaps the eye**.....7.00 - triples
DEVIL'S DELIGHT - Sellers,'84,sev.tet.MLa.RE.28"6"**Dramatic, eye-catching black red self w/yel-gr th, excellent hem**.....10.00
DEVIL'S DEN - Lambert,'84,dor.dip.ext.EM.25"6.5"**Scarlet orange w/crimson halo and green throat, bright flower**.....7.00
DIVERTISSMENT - Hager,'90,dor.dip.MLa.45"6.5"**Very good light yellow spider with pale reddish eyezone**, R=4.8/1.....7.00 - quads
DIXIE ROOSTER - N. Roberts,'04int.sev.dip.ext.M.RE.35"7.5"**Charming, wine purple spider w/yel/gr. th**, R=4.5/1, UF traits...15.00
DON STEVENS - Stevens,'87R,dor.tet.ext.M.32"6"**SMASHING bright lemon yellow w/dark red eyezone**, and yel-gr th.....8.00 - quads
DOROTHY FRENCH - Murphy,'62,ev.dip.Em.45"5.5"**Tall spidery star, a rich purple bitone, lavender sepal edges, white ribs**..7.00 - fall
DOUBLE ACTION - Reinke,'92,dor.dip.EM.RE.24"5.5"**GORGEOUS, EXCELLENT DOUBLE golden yellow self w/gr th**....7.00 - quads
DOUBLE BOLD ONE - Miller,'82,dor.dip.EM.32"6"**Smashing gold Double with wide red eyezone and cherry red throat**.....7.00
DOUBLE POM POM - Miles,'73int.dor.dip.M.34"6"**Salmon pink blend in a very pretty double, one of Miles' best doubles**....7.00
DREAM A WHILE - Brown,E.C.'83,sev.dip.ext.EM.23"5.5"**Clear, ruffled, dreamy soft light pink w/green th, very good**.....7.00 - quads
DREAM CATCHER - Roberts, N.'95R,dor.dip.M.36"10", **Classic spider in a rose-bronze blend with green throat**, R=6.2/1....20.00
DUCHESS D'ORLEANS - Lambert,'90,dor.dip.fr.M.28"6"**Unusual Form Quilled Crispate in rose, edged pink w/gr. th**.....10.00-triples
DUKE OF EARL - Benz,'90,dor.tet.ext.M.30"5" **Magnificent, round, beautifully ruffled rich velvety ruby red self w/gr th**....7.00 - quads
DUNE NEEDLEPOINT - Pauley,'86,dor.dip.RE.M.20"6"**Buff-tan UF Twisting Crispate, w/pink rose halo, reblooms here**.....7.00 - quads
DUTCH WINDMILL - Terry,'68,sev.dip.V.fr.ext.E.RE.38"7"**Pale yellow spidery Unusual Form Twisting Spatulate**, R=3.7/1..8.00 -triples
EFFERVESCENCE - Gates,'90,ev.dip.fr.ext.E.RE.18"5.25"**Gorgeously colored dark rose w/darker rose eyezone, green th**.....7.00 - quads
EGGPLANT ESCAPEDE - Reed,'96,dor.dip.ext.ML.36"6.5"**Eggplant purple Unusual Form Cascade with yellow throat**.....8.00 - triples
EIGHTEEN KARAT - EW Brown,'78,sev.tet.RE.EM.25"6.5"**Ruffled, widely petaled, creped bright gold w/gr th, favorite**....7.00 - quads
ELIZABETH ANN HUDSON - Munson,'77,Hardy ev.tet.EM.26"5.5"**Lovely peach-pink w/striking purple eye, rfl edges**.....7.00 - quads
ELLA'S CURLS - K. Roberts,'03,sev.dip.EM.RE.27"8"**Cherry red Unusual Form Spatulate**, segments curl, very green th.....25.00
ELLES - Spalding,'83,ev.dip.ext.M.21"5.75"**Gorgeous, bright pink blend with large contrasting green throat, ruffled**.....7.00 - triples
EL ROSARIO - Peck-Savage,'86,dor.tet.M.ER.Ext.**Round rose self with yellow throat, a real beauty, not often listed**.....8.00 - triples
EMERALD DEW - Harris,'80,dor.tet.ext.EM.RE.28"6.5"**Very bright lemon yellow w/gr th, large sepals give "squared" look**.7.00 - quads
EMERALD EYE - Lambert,'70,Hardy ev.dip.36"8.5"**Bluish purple Unusual Form Variable Crispate w/purple eye & gr. th**....15.00-fall
EMERALD ISLE - Fay,'54,sev.dip.L.26"6"**Exceptionally pretty greenish lemon yellow, very curly Unusual Form Cascade**....10.00-fall
ENDEARING - Childs,'80,dor.dip.fr.ext.EM.RE.28"6.5"**Luscious, vivid pink and white bicolor w/green throat, lovely**.....9.00-triples
ETHIOPIA - Munsen,'76,hardy ev.tet.M.32"6"**Rich, opulent purple self with cream throat, a favorite oldie**.....6.00
ETOSHA - Munson,'85,ev.tet.EM.RE.30"6"**Reddish amber blend of great color, opens flat & wide, commands attention**.....7.00 - sf/fal
EVENING GOWN - Reckamp,'72,dor.tet.M.fr.28"5"**Lovely glowing, wide, rich melon-pink blend w/gr th, Reckamp classic**...7.00- triples
EXOTIC STAR - Couturier,'94,dor.dip.fr.M.36"7.5"**UF Pinched Crispate, cream & rose blend w/faint rose-bronze halo**.....10.00 - triples
FACE THE NATION - Lambert,'73R,dor.dip.noc.ext.E.18"6"**Reddish Unusual Form Variable Crispate w/huge green throat**..6.00 - quads
FAIRY TALE PINK - Pierce,'81,sev.dip.M.RE.24"5.5"**Ruffled light pink with green th, GREAT, a winner, good parent**.....6.00 - quads
FERRIS WHEEL - Childs,'60,dor.dip.VFR.ext.M.40"7"**Spidery brick red classic spider self w/gold throat, R=5.3/1, good**.....7.00 - quads
FIFE AND DRUM - Wynne,'65,sev.dip.MLa.26"5.5"**Bright red-orange with bright red eyezone, an eye catcher**.....6.00 - triples
FINGER LAKES - Coffe-Lazarus,'87R,sev.dip.M.RE.26"9"**Huge lilac purple and magnolia purple bitone w/green throat, btfl**..10.00-sf/fal
FIRE ARROW - Webster,'86,dor.tet.M.24"8.5"**FR.Bright red Unusual Form Pinched Crispate w/green th**.....15.00
FIRE CUP - Pride,'65,dor.dip.M.35"5.5"**Brilliant red Unusual Form Pinched Crispate with green throat, an eye catcher**.....7.00
FIRE FROM HEAVEN - Grovenstein,'87,dor.tet.M.38"5.5"**Narrow red tet self w/apple green throat, marvelous red shade**.....8.00
FIRESTORM - Krekler,'79,dor.dip.EM.31"8"**Great brick red over gold w/gold-olive th, Unusual Form Twisting Crispate**.....9.00

FIRST LADY HILLARY – Dickerson, '94R, sev. tet. M. 32" (taller here) 7" **Commanding ivory** w/gr. th. nice plant and flower.....8.00

FLAMENCO QUEEN - Benz, '89, dor. tet. ext. ML. 36" 6" **Deep blue-red** self with chartreuse throat, **showy, excellent**.....7.00 – quads

FLAME OF HADES – Benzinger-Branham, '83, dor. tet. ext. ML. 46" 6.5" Late blooming flame red self with yellow throat.....10.00 – sf/fall

FOL DE ROL - Connell, '52, ev. dip. ML. 40" 8" **Brown and yellow bicolor Classic Spider** with **splashy dark eye**. R = 6.7/1.....9.00

FOLKLORICO - Lambert, '70, dor. dip. EM. 33" 6" **Yellow over painted red with red eye and green throat, unusual pattern**.....9.00

FONDLY YOURS - Peck '79, dor. tet. Noc. EM. 27" 6.5" **GORGEOUS, recurving bright yellow, a Peck favorite**.....8.00 - triples

FORSYTH ARISTOCRAT - LeFever, '99R, dor. tet. ML. fr. ext. 34" 5" **Nice purple with white edging & good green throat**.....10.00 - triples

FRANCIS OF ASSISI - Moldovan, '98, sev. tet. ML. RE. 24" 5.5" **Crimson with 1/8" white picotee edge with green heart**.....10.00 - triples

FRANDEAN - Peck, '79, dor. tet. ML. 20" 6.6" **Pinkish lavender with violet eyezone & green throat, flower is chalky looking**.....6.00 - quads

FRANK GLADNEY - Durio, '82, Hardy ev. tet. EM. RE. 26" 6.5" **Hot coral-cerise-pink self with gold throat, great color**.....8.00

FRILLY BLISS – Joiner, '98, ev. dip. ML. 34" 9", **Gorgeous pink UF Variable Crispate/Cascade** w/rose halo, 6-way, BC=36.....10.00 - fall

FRITZ SCHROER – Schroer, '61, hardy ev. dip. ext. EM. Re. 31" 9" **Brilliant orange Classic Spider** w/widespread segments, R=6/1.....10.00

FUN FLING - Childs, '82, dor. dip. VFR. E. RE. 28" 6.5" **Flamboyant Unusual Form Spatulate in vivid purple** w/lemon green th...7.00 - quads

GADSDEN GREENSLEEVES - Reinke, '93, dor. dip. fr. M. 40" 8" Green-yellow Spider, Ratio = 4.6/1.....8.00 - quads

GADSDEN LADY - Reinke, '92, sev. dip. fr. M. RE. 24" 10" **Sunny yellow classic spider** w/green throat, some polys, R = 5.6/1.....7.00 - quads

GARDEN PORTRAIT - Bechtold, '53, dor. dip. M. 28" 8" Pale yellow self, a **CLASSIC SPIDER, Ratio = 5.8 to 7.3/1**, sets seeds...8.00

GATO - Durio, '82, sev. tet. EM. RE. 28" 5.5" **Deep, bright red** self with green throat, **good open and flat form**.....6.00 - quads

GAY TROUBADOUR - Nesmith, '41, dor. dip. ext. ML. 40" 6" **Medium orange & orange-yellow bicolor** star, sepals dusted red...7.00 - quads

GLORIOUS TEMPTATION – Sellers, '84, sev. dip. M. RE. 28" 5" Serenely colored orchid lavender self with green throat.....10.00 - fall

GOLDFINGER'S FINGERS – Couturier, '99, dor. dip. M. 30" 7.5" **Vibrant gold Classic Spider** w/crikkled edges & gr-gold th.....10.00

GOLLIWOG - Wild, '85, dor. dip. ML. RE. 25" 8.25" **Marvelous peach, wheel shaped, Unusual Form Spatulate**, yel-gr. th.....7.00 - fall

GRACE AND GLORY – Childs, '82, dor. dip. fr. RE. ML. a. 25" 8.5" **Elegant Cascade lavender-cream** bitone w/cream th, Rare.....10.00 - fall

GRACIOUS GIFT - Childs, '84R, dor. dip. ext. fr. M. 28" 6" **Blue-lavender blend with bluish watermark** and lemon throat.....6.00 - triples

GRAND MASTERPIECE - Dove, '84, dor. dip. Fr. ext. EM. 21" 5.75" **GORGEOUS rfl. deep purple** w/green throat, btfl. color.....8.00

GRAND PALAIS - Munson, '87, sev. tet. M. (late here) RE. 24" 6" **Beautifully colored rosy lilac-lavender** with lemon-cream th.....8.00

GRANITE CITY TOWHEAD - Miller, '85, dor. dip. ext. ML. 32" 6.5" **Spidery burnt orange bitone crispata**.....7.00

GRAPE ICE - Childs, '72, dor. dip. M. 36" 6" **Lovely bluish lavender** w/very green throat, **good color clarity, lovely clumps**.....6.00

GRAPE VELVET – Wild, '80, dor. dip. M. 24" 5" **Velvety dark and luscious purple** with small lime green heart, a **beauty**.....7.00

GREY WITCH - Reed, '01, dor. dip. 30" 6" dor. dip. EM. **Unusual grey-lavender spider** w/dramatic purple eyezone, R-4.22/1.....10.00

GUNSMOKE - Hanson, '91, sev. tet. M. fr. 24" 6" Broad, lightly ruffled, **fascinating shade of smoky lavender** w/gr. th., sunfast.....7.00 - quads

HAIL MARY - Moldovan, '93, dor. tet. ext. E. 24" 5.5" **Gorgeous pink blend w/silver highlights & deeper pink halo, yel-gr th**.....14.00

HARBOR BLUE - Lake, '62, ev. dip. EM. 26" 7.5" **Bluish violet spider** with cream green throat, Ratio = 4.3/1. **Plant in full sun**.....7.00 - fall

HAT DANCE - Millikan, '83, sev. tet. ext. ML. 28" 5.5" **Eyecatching yellow overlaid red w/red eyezone**, yellow-green throat.....8.00 - triples

HAWAIIAN SWIRLS - Shooter, '98R, sev. dip. vfr. RE. M. 27" 7.5" **Scrumptious yellowish cream overlaid splashy strawberry**...10.00

HEAVENLY CURLS - Gossard, '2000R, dor. dip. M. 27" 7" **Near white Unusual Form Spatulate & Cascading Crispate**, great...15.00

HEAVENLY MISTER TWISTER – Gossard, '04, dor. dip. M. noc. 39" 8" **Dazzling beautiful pinkish red twisting spider**, R=4.8/1...35.00-fall

HELAMAN - Robertson, '82, hardy ev. dip. EM. RE. 29" 9" **Very large, exciting yellow UF Crispate, edged bronze**.....6.00 - triples

H. Fulva Europa - ev. triploid, M. 30" -50" ,5.5" -7", Tawny or fulvous over yellow w/red eyezone, orange throat, stoloniferous.....5.00 - clumps

H. Fulva Europa - (**Fertile Korean form - 1984**) Hardy ev. dip. 49" 5" Long blooming tawny orange w/darker rust eye, BC=30...10.00 - quads

H. Fulva 'Flore Pleno' - **Stout, 1917**, Dor. triploid, 30" 5" ML-L, **Very hardy, beautiful bright orange & red double, pretty**.....7.00 - quads

H. Fulva "Kwanzo" - dor. triploid, 30" 5" Fulvous rust red over orange, para double, 300 years old, light mahogany rust eye.....5.00 - quads

H. Lilioasphodelus - "Lemon Lily", dor, dip. fr. noc. ext. 30" 4" **Beautiful lemon yellow flowers** can stay open for 20-67 hours.....7.00 - clumps

H. Sempervirens - (species) ev. dip. VL. 48" 4.5" Like H. Fulva, but **very late blooming**, BC=60+, **long Sept.-Oct. bloom**.....8.00 - quads

HERMIE - Glidden, '88, Hardy ev. dip. M. RE. 18" 7" **Showy red bitone** with darker red halo, **very good and showy**.....8.00

HERNANDO STAR - Boylan, '80R, sev. dip. M. 32" 8" **Clear yellow** self with green throat, a **huge Exotic**.....6.00 - quads

HOMESPUN CANDY PINK - J. Roberts, '89, dor. dip. ext. M. 24" 3.75" **Pretty orchid pink** w/small yellow halo & green throat.....7.00 - quads

HOT EMBER - Stamile, '87, ev. tet. M. 30" 6" **Reddish orange self, nice color, round form, orange throat, a great favorite**.....7.00 - triples

HOT TOWN - Stevens, '83, dor. tet. ML. 28" 4.5" **Bright red showstopper** w/ **big, splashy, bold black-red eyezone, a favorite**.....7.00 - quads

HUMMINGBIRD - Benesh-Schoeneman, '55R, dor. dip. M. 30" 5" Shining, velvety, **deep ruby red w/intense green throat**.....8.00 - quads

INDIAN FANDANGO - Belk, '85, dor. dip. fr. ext. M. 30" 8" **Spidery, fiery red Exotic Form** with green eye and gold throat.....10.00

INDONESIA - Hite '79, dor. tet. M. fr. 24" 5.5" Round, **luminous, light yellow with lovely fluted and ruffled edges**, gr th.....6.00 - quads

INSTANT LOVE – Harris-Benz, '89, dor. tet. ext. M. 22" 5" **Very bright rose-pink** with green throat, wide, rfl, waxy substance.....7.00 – quads

"Intelligent Rosemary" – Miller, dor. dip. 32" 8" Dark red spidery with green throat, 6-way branching here, BC can go to 55.....10.00 - fall

IN THE PURPLE - Peck '81, dor. tet. M. 25" 6" **EXCELLENT PURPLE** w/wine halo, & gr th, a **superior cultivar, a winner**.....7.00 - triples

ISLE OF DREAMS – Kirchhoff, '89, sev. tet. ext. EM. RE. 22" 6" Deep creamy lemon white self w/**medium lilac eyezone**. gr. th.....8.00

JAMES LEWIS - Peck, '87, dor. tet. M. 27" 6.5" Medium **bright red self w/green throat, wide, ruffled segments**.....7.00 - quads

JAMES RIVER ROSE - Reed, '05 int. dor. dip. Mol. 45" 6" **Intense bright rose w/cream yellow throat, hot pink**, great branching....15.00

JANICE BROWN - Brown, '87, sev. dip. EM. 21" 4.25" **GORGEOUS** bright pink with **sumptuous rose pink eyezone & gr. th**.....7.00 - triples

JAVIER – Santa Lucia, '99, dor. dip. M. RE. 30" 6.5" **Huge, flat bright, deep rose pink w/red undertone**, gr-wh. th, **superb**.....15.00

JEAN - McDade, '43, dor. dip. VL. 38" 7" **Bright orange-red & yellow bicolor spider**, R=4.2/1, valuable for **late bloom season**....8.00 - quads

JEAN CRATCH - Carpenter, '87, sev. dip. EM. RE. fr. ext. 23" 6.25" A **scrumptious lovely shade of shell pink beauty** w/green th....10.00

JELLYFISH JEALOUSY - Reed, '96, dor. dip. EM. RE. fr. ext. 24" (taller here) 7" **Pale yel-gr UF Cascade** w/violet feathery eye, gr th....25.00

JERSEY JIM - Murphy, '01, sev. dip. fr. RE. ML. a. 53" 8" **Gold self Unusual Form Pinched Crispate w/tiny green throat, fertile**...15.00

JERUSALEM - Stephens-Seabright, '85R, dor. tet. ext. M. 28" 5" **Very bright, ruffled deep gold self** with green throat, **Great!!!**.....8.00 - triples

JESSE JAMES - Peck, '86, dor. tet. M. 22" 5" **Beautiful, bright, very rich shade of rose-red** with a yel-gr. th, **unusual color**.....7.00 - quads

JIM COOPER - Lambert,'70,dor.dip.ext.EM.(Late here)30"7"**Bright standout English vermilion red** w/gr th, color carries.....7.00 - quads
JOANN LYON - Tau-Mrak,'98R,sev.dip.fr.M26"6"**Deep lavender** with pale yellow eyezone and green throat.....10.00 - triples
JOCK RANDALL - Peck,'71,dor.tet.M.29"6"**Gorgeous cerise rose color**, popular, slower increase, seldom listed, **btfl**.....7.00
JOEL - Harris,'81,dor.tet.ext.EM.24"5.5"**Beautifully ruffled, magnificent yellow** self with green throat, **a classic**.....7.00 - quads
JONETTE - Sikes,'83,dor.dip.RE.,FR.EM.20"4.75"**Lovely rose-pink w/deep rose-pink halo & green throat**7.00 - triples
JOVIAL - Gates,'87,sev.tet.fr.ext.E.RE.20"5"**Bright & vivid wine red** w/chartreuse green throat, full, everblooms in the South...7.00 - quads
JO WEISS - Holman,'86,ev.dip.fr.EM.RE.26"7"**Very pretty, SPIDERY salmon pink** w/very **prominent green eyezone**.....7.00 - triples
JOYFUL OCCASION - Spalding,'76,**dor.here**,dip.ext.M.20"5.75"**M.Very ruffled, deep clear pink blend** w/gr th, **great**.....6.00 - triples
JUDGE ROY BEAN - Reinke,'96R,dor.dip.fr.ML39"9"Soft **persimmon & gold classic spider** w/creamy midribs, R = 5.2/1.....8.00 - triples
JULIA'S CHOICE - Wall,'86,hardy ev.dip.M.26"6.5"**Lovely near white UF Cascade** with yellow throat.....10.00
JULIE FASSETT - Bergles,'69,dor.dip.M.fr.noc.28"5.5"**Fiery red Unusual Form Twisted Crispate** w/ huge green star th.....7.00 - quads
KACHINA DANCER - N.Roberts,'97,dorl.dip.E.RE.30"6.5"**Reddish purple spider that twists**, yellow throat, R=4.09/1.....12.00
KENNELL'S FOLLY - Kennell-Whitacre,'88,dor.dip.26"8"**Cherry red w/wide yellow star throat**, petals hooked & reflexed.....8.00 - triples
KINDLY LIGHT - Bechtold,'50,dor.dip.M.30"10"-11"**Huge light** yellow classic spider with faint halo, **beautiful**, R=7.7:1.....7.00 - quads
KINDLY LIGHT - Bechtold,'50 (**Burns Clone**), **This clone is more pod fertile than most other Kindly Light clones**.....8.00 - triples
KINGS CLOAK - Munson,'69,ev.tet.EM.RE.24"6"**Rose-wine with a bright magenta eye, very pretty older favorite**.....6.00 - quads
LADY FINGERS - Peck,'67,dor.dip.M.32"6"**EXCELLENT yellow-green SPIDER VARIANT** w/green throat, [Ratio=4.8:1]....6.00 - quads
LADY HILLARY - Reinke,'97,dor.dip.39"9"MLa.**Light golden blond spider** w/chartreuse th, R=4/1, tall, BC=25, also a UF...8.00 - triples
LADY MARY MONTAGUE - Wynne,'63,dor.dip.EM.RE.26"6.5"**Gorgeous bluish mauve w/lemon peach eyezone**, gr th.....8.00 - triples
LADY VIOLET EYES - Salter,'87,sev.dip.MLa.16"3.5"**Ashes of roses w/lavender blue & purple eyezone**, yel-gr throat.....6.00 - triples
LAKE NORMAN SPIDER - Carpenter,'82,M.dor.dip.fr.ext.28"8"**Beautiful rose-pink blend** w/cream-gr. eyezone & gr. th.....10.00
LATER ALLIGATOR - Reed,'98,sev.dip.ext.MLa.28"6"**Rose-purple Unusual Form Pinched Crispate beauty** w/lemon th.....8.00 - triples
LAUGHING CLOWN - Alexander,'58,ev.dip.ext.E.RE.28"5"**Red & orange bitone Spider** w/lighter edges, crimson rouge eye...7.00-triples
LAUGHING FEATHER - N.Roberts,'03,sev.dip.noc.ML RE.32"7"**Purple spider**/extended gr th, white midribs, **UF Crispate**....20.00
LAVENDER HANDLEBARS - N.Roberts,'94,dor.dip.ext.M.36"8.5"**Marvelous spider & UF Pinched & Quilled lavender**.....18.00 -fall
LAVENDER LIGHT - Webster,'85,dor.tet.M.20"7.5"**Very pretty spidery lavender orchid** w/wide green throat.....8.00 - triples
LAVENDER TONIC - Spalding,'83,dor.dip.ext.M.17"5.25"**Delightfully colored lavender blend** with green throat.....7.00 - triples
LAVENDER VELVET - Childs,'82,dor.dip.FR.VL.28"7.5"**Very late gorgeous strong lavender w/green throat, Sept bloom**.....15.00 - fall
LEMON CUSTARD - Millikan-Soules,'87,dor.dip.fr.ext.23"6.25"**Huge lemon yellow** with cream midribs and green throat.....7.00 - quads
LEMON PRELUDE - McEwen,'76,dor.tet.EE, ext.21"5"**Very bright, shining, waxen lemon yellow, very early bloom**.....7.00 - quads
LEMON SURPRISE - Stone-McEwen,'83,dor.tet.E.ext.RE.30"7"**Crisp lemon self** with deep gr. th, **reliable rebloom here**.....8.00 quads
LEONARD BERNSTEIN - Kirchhoff,'93,Hardy ev.tet.EM.RE.ev.tet.ext.26"5.5"**Vibrant, lovely red self** with green throat.....7.00 - quads
LIBERATED BETSY - Gates,'80,sev.tet.fr.E.RE.26"5.5"**Deep lavender purple** with white midribs & gr th, **richly colored**.....7.00 - quads
LILY DACHE - Hall,'61,dor dip.MLa.40"5.5"**Flamboyant curled rich golden yellow elegantly brushed red**, R=3/1, UF traits...7.00 - fall
LILTING BELLE - Wilson,'83,sev.dip.ext.M.36"8"**Pink w/lavender overtones & wide whitish eyezone, UF Cascade**.....8.00
LIMITED EDITION - Lambert,'73,dor.dip.ext.E.35"8"**Large chrome lemon Unusual Form Spatulate, great flower**.....8.00 - quads
LITTLE FELLOW - Tanner,'68,dor.dip.E.27"4"**Very good lavender with bluish cast and green th, pretty pony, good color**.....5.00 - quads
LITTLE GRAPETTE - Williamson,'72,sev.dip.E.12"2"**Charming grape purple mini** w/gr th, **excellent color, a favorite here**...6.00 - quads
LITTLE NICKY - Durio,'80,sev.dip.EM.RE.24"4"**Recurved bright raspberry cerise** w/Nile green throat, **rich unique color**....7.00 - quads
LOBO LUCY - Roberts, Ned,'97,sev.dip.ext.M.35"7"**Red classic spider/UF self** w/bright yellow th, R = 5.1/1.....8.00 - quads
LOCH NESS MONSTER - Couturier,'93,dor.dip.M.25"7.5"**Silvery lavender spider** w/darker lav halo, yel-gr th, R=4.4/1.....15.00
LOIS BURNS - Temple,'89,dor.dip.E.\$#.30"8.6"**Large greenish yellow Spider** w/gr th, **petals and sepals curl & twist**.....8.00 - triples
LONG STOCKING - Stamile,'97R,ev.tet.Em.RE.46"9.5"**Red spider tet self** with green throat, Ratio = 4/1.....8.00 - triples
LOOK AWAY - Sellers,'75,sev.tet.M.30"7"**Extremely showy light copper brown with chocolate eyezone**.....8.00
LOVELY TO SEE - Sellers,'81,ev.dip.RE.M.30"5.5"**Marvelous beguiling & dreamy pink self** w/green throat, very pretty.....8.00 - triples
LOVE THEE DOLLIE - Reinke,'90,sev.dip.M.RE.29"7"**Exceptionally pretty creamy apricot blend** w/rose halo, gr-gold th...8.00 - triples
LUNA - Murphy,'04,sev.dip.M.RE.fr.39"7.5"**Large creamy yellow borderline UF Crispate**, gr th, **instant rebloom**.....15.00
LYNDELL'S ROSADO - J.Tomlinson,'03,dor.dip.VFR.noc.26"6.5"**Nice rose-pink blend with chartreuse throat**.....10.00
MAD MAX - Wilson-Schott,90,dor.dip.M.46"7"**Spidery rosy maroon with deep maroon eyezone** and chartreuse throat.....8.00
MADAM BESSEMER - Schwarz,'05,dor.tet.M.34"8.5"**Rich velvety dark burgundy red w/intense green throat**.UF Crispate..35.00/sf/fall
MADRID - Traub,'59,Hardy ev.tet.M.RE.38"7"**Vivid orange-red star Spider, first ever tet child of induced tets, Historic**....8.00
MAE GRAHAM - Spalding,'77,Hardy ev.dip.M.18"6.5"**Lovely rich pink blend** w/gr th, **long bloom season, reliable rebloom**...8.00-triples
MAGICAL - Childs,'77,dor.dip.M.RE.ext.vfr.32"8"**Very showy lavender bitone** with lemon throat, **lovely flower**.....7.00 - s.f.
MAGIC OF OZ - Herrington,95R,dor.dip.M.37"7"ext.Yellow pink blend with rose pink eyezone and **intense green throat**.....20.00
MALACHITE PRISM - Doorakian,'99R,sev.dip.M.RE.36"4.25"**Unique lavender w/purple eyezone, smashing green th**.....15.00
MALAYSIAN MONARCH - Munson,'88,sev.tet.EM.RE.24"6"**Gorgeous light burgundy-purple** self w/cream white throat.....7.00 - quads
MANCHU LANTERN - Benz,'89,dor.tet.ext.M.22"7"**Intense light coral rose w/deep gr th, gorgeous color**, big blooms.....10.00
MARISKA - Moldovan,'86,dor.tet.ext.M.RE.28"6"Large, wide **sumptuous blue pink** and cream blend & lemon green th.....7.00 - triples
MARKED BY LYDIA - Temple,'94,sev.dip.ext.E. RE.29"8.5"**Lovely yellow Spider w/dazzling purple eye**, gr th. R=5.3/1...10.00
MARSE CONNELL - Connell,'52,ev.dip.M.38"8"**Marvelous, bright mahogany red star spider, grabs attention**, R=4.2/1.....6.00-triples
MARTIE EVEREST - McDade,'47,ev.dip.ML.40"7"**Copper & parchment yellow bicolor spider**, R=4.8/1, good increase.....6.00 - quads
MATTHEW MARTIN - Dougherty,'92R.dor.tet.ext.EM.28"5.5"**Warm and richly colored brown self, btfl with golds**.....8.00 - triples
MAUNA LOA - Roberts,'79,dor.tet.EM.22"5"**Gorgeous, bright salmon-tangerine blend**(hot lava), **red wire edges, favorite**...7.00 - quads
MAY SEVENTY-EIGHT - Benzinger-Branham,'81,sev.tet.EE.RE.24"6"**Bright yellow-gold early bloomer**.....7.00 - quads
METAPHOR - Gates,'84,sev.tet.EM.RE.ext.FR.22"5"**Beautiful, wide, clearest lavender** with green throat, **a favorite**.....8.00

MIDNIGHT MAGIC - Kennebrew,'80, ev. tet. EM. ext. 28"5.5" **Very good black red** with green throat, makes **huge fans**.....8.00 - quads

MIGHTY PRETTY - Belden,'90, dor. tet. M. (late here) 26"5" **Crystal clear rose red blend** w/green yellow eyezone & gr. th.....7.00 - quads

MIKADO - Stout,'29, sev. dip. EM. 36"6" **Medium orange gold with red-purple eye, historical**. [Ratio = 3.4:1], good increase.....6.00 - clumps

MILK CHOCOLATE - Carney, recognized name, not formally introduced, dor. dip. M. 28"4" **Chocolate brown, aptly named**.....7.00 - triples

"Milner Sdlg." - ev. tet. 20"6" **M. Marvelous polychrome of pink, tangerine, & orange sherbet** with green throat.....9.00

MINISKIRT - Lambert,'69, dor. dip. M. ext. 28"4" **Eye-catching, warm pink bitone w/rose red eyezone & yel- gr. th, pretty**.....7.00 - quads

MISS JESSE - Hardy,'56, dor. dip. M. 40"7" **Orchid mauve and yellow bicolor spider** w/ ratio = 4.1/1, **lovely in clumps**.....7.00 - fall

MOKAN BUTTERFLY - Lenington,'85, sev. tet. E. 35"5.5" **Near white w/beautiful lavender halo, gr th, exceptionally pretty**...7.00

MONSTER - Pettus,'76, dor. tet. M. 32"9" **Huge spidery yellow** w/faint brown brushings, green throat, **mammoth showstopper**....8.00 - quads

MOON LADDER - Oakes,'95R, sev. dip. M. 56"8.5" **Lovely lavender bitone** with green throat, great branching & bud count.....15.00 - fall

MORGEN LE FEY - Whitacre,'92, sev. dip. ML. 42"7.5" **Copper-brown blend** with brown eyezone & gold th, **UF Crispate**....10.00 - fall

MORMON SPIDER - Roberson,'83, dor. dip. ext. M. 28"8.5" **HUGE, very spidery** looking yellow edged bronze w/gold throat....8.00 - triples

MORNING BREAKING - Reinke,'93, sev. dip. M. 30"9" **Creamy strawberry & chartreuse spider, red pin stripes, R=4.27/1**..10.00 - triples

MORNING MOOD - Sellers,'93, sev. dip. ext. noc. M. RE. 24"5.5" **Orchid lavender w/huge white & green throat, lovely**.....9.00

MOUNTAIN TOP EXPERIENCE - Temple,'89, ev. dip. E. RE. 29"7.5" **Btfl green-yellow-rouge bicolor spider w/gr th R=4.8/1**....10.00

MULETA - Kennedy,'85, dor. dip. M. 26"7" **Very bright scarlet** w/olive-gr th, red veining, **some petal twisting and pinching**.....7.00 - quads

MUMBO JUMBO - Guidry,'79, sev. dip. fr. ext. noc. E. RE. 21"6.25" **Lovely, ruffled rose pink bitone** w/darker rose halo, gr. th.....7.00 - triple

MY MIAMI FRIEND - Krekler,'79, dor. dip. M. 38"6" **Spidery deep reddish purple** with gold throat, **quite striking**.....7.00 - triples

NATHAN SOMMERS - N. Roberts,'01, sev. dip. M./RE. ext. 32"8.5" **Rich raspberry red UF Curling Crispate, outstanding color**...20.00

NAVAJO BLANKET - Grantham,'68R, dor. dip. M. 30"8.5" **Yellow spider w/intricate maroon eye, gr th. R=6.3/1, true clone**....10.00

NAVAJO CURLS - Ned Roberts,'95R, sev. dip. fr. noc. LM. 40"8.5" **Yellow-gold UF Cascade** w/many different faces.....10.00 - quads

NAVAJO PRINCESS - Hansen,'92, sev. dip. ML. RE. noc. ext. 24"4.5" **Gorgeous pale pink with bold rose eyezone, dark gr th**.....8.00

NEAL BERREY - Sikes,'87, sev. dip. ext. M. 18"5" **Rose pink bitone w/gr-yel th, very rfl, deep pink in petal ruffles, gorgeous**.....8.00

NEMISES - Lambert-Whitacre,'93, dor. dip. M. 28"8" **Dark rich purple Unusual Form Crispate w/green star throat**.....15.00

NETTIE DOWNING - Schott,'94R. M. dor. dip. 26"5.5" **Gorgeous near white Unusual Form Cascade** with green throat.....10.00

NIGHT WINGS - Williams,'86, sev. tet. M. 30"6" **Velvety deep black red to black** w/chartreuse throat, slower increase, **good**.....8.00 - triples

NORDIC NIGHT - J. Salter,'92, sev. tet. Em. RE. 24"5" **Round rich royal purple w/chalky red-purple eyezone, green throat**.....7.00 - triples

NORTHWIND DANCER - Schaben,'01, dor. dip. L. 42"7.5" (WS=12") **Breathtaking raspberry pink UF Twisting Crispate**.....30.00 - fall

NORTHWIND DRIFTER - Schaben,'01, dor. dip. M. 44"8.5" **Unusual Form Variable Crispate in pink** w/gr-yel th, BC=25+.....20.00

NOSFERATU - C. Hanson,'90R, sev. tet. FR. M. 26"6" **Excellent purple self with chartreuse green throat**.....8.00

NOVELTY NUMBER - Lambert,'65, dor. dip. 28"5" **Yellowish with rose-red eyezone & yel-gr th, very different color pattern**...6.00 - quads

NUMINOUS MOMENTS - Apps,'85, dor. dip. fr. noc. M. 26"4.5" **Very pretty rose-pink** with purple eyezone & light yellow th.....6.00 - clumps

OBSIDIAN - Stamile,'89, dor. tet. M. 27"4.5" **EXCELLENT, deep and velvety black-red** with chartreuse throat.....8.00 - triples

OLALLIE KEITH - Darrow,'82, dor. dip. L. 27"4.5" **Burgundy and cream bicolor** with yel-green throat, **a late must have**.....8.00 - fall

OLIVE BAILEY LANGDON - Munson,'75, sev. tet. E. 28"5.5" **Deep purple self of good color, reliably reblooms**.....7.00 - triples

OLIVE'S ODD ONE - Pauley-Couturier,'92, dor. dip. M. RE. 40"6" **Paprika & red reverse bitone, gold edges, variable form**.....10.00 - fall

OLYMPIC GOLD - Peck,'88, dor. tet. M. 28"6.5" **Beautiful, shining deep gold self, distinctive, good increase**.....7.00 - quads

OMOMUKI - Stamile,'92, dor. tet. fr. ext. EM. 26"5" **Nicely ruffled chartreuse yellow self with green throat, a good one**.....8.00 - triples

ONLY IN AMERICA - Schwarz,'05, dor. tet. M. 32"9" **Bright, clear orange red UF Variable Crispate** w/green throat, **twists**....60.00

OPEN HEARTH - Lambert,'80, dor. dip. M. 26"9" **Large red & copper bitone UF Spatulate** w/ruby halo, gr th, opens flat.....7.00 - triples

ORANGE BLAZE - Rudolph,'76, dor. tet. Em. 36"5" **Luscious colored red orange w/standout cherry eyezone, dazzling**.....7.00 - triples

ORANGE BOUNTY - McEwen-Brooks,'76, dor. tet. ML. ext. 30"7" **Striking, huge golden orange** w/persimmon halo, **eyecatcher**...7.00-triples

ORANGE VELVET - Joiner,'89, sev. dip. M. RE. 30"6.5" **Superb, high quality rich orange sherbet self w/gr th, exceptional**.....8.00

ORANGE VOLS - Kirby-Oakes,'81R, dor. dip. ext. M. RE. 24"6.5" (taller here) **Striking incandescent orange bitone**.....6.00 - quads

ORANGUTAN - Reed,'92, dor. dip. EM-L. RE. 26"6" **Brilliant pumpkin orange w/smashing red eye, & gold th, reblooms**.....8.00 - quads

ORCHID CORSAGE - Saxton,'76, dor. dip. ML. A. RE. fr. 32"7.5" **Flamboyant, lovely orchid-pink UF Cascade, curly segments**.....8.00

PANTHERETTE - Dickerson,'90, dor. dip. M. RE. ext. 28"6" **Showy, spidery flower in a nice shade of pink with green throat**...9.00 - fall

PARADE OF PEACOCKS - Oakes,'91, dor. dip. ML. A. 36,8, **Peachy rose UF Twisting Crispate** with rose eyezone & cream th.....10.00 - fall

PARIAN CHINA - Reckamp,'73, dor. tet. M. 30"6.5" **Handsome, lightly ruffled creamy apricot peach** w/gr. th, **warm color**.....7.00 - triples

PARLOR GAME - Hager,'89, dor. dip. M. RE. 25"7" **Bright bronze-orange SPIDER, w/prominent red steeple eye, R=4.6/1**.....7.00 - quads

PATIENCE PLUS - Hansen,'86R, sev. dip. EM. RE. fr. ext. noc. 22"5.25" **Ruffled light pink blend w/dark green throat, lovely**.....6.00 - quads

PATSY BICKERS - Dickerson,'90, sev. dip. FR. M. ext. 20"11" **Beige pink classic spider, brown-red eyezone, R = 5.5/1**.....6.00 - quads

PAT THORNTON - Glidden,'89, Hardy ev. dip. EM. 26"8" **Light purplish pink UF Spatulate w/red purple eyezone, large gr th**....8.00

PEACOCK ALLEY - Wynne,'63, sev. dip. EM. 32"6" **Rosy grape with purple eyezone and white edge, a classic**.....8.00 - quads

PENNDRAGON - Wynne,'61, ev. dip. M. 26"7" **Rosy cream blend with jade green throat**.....7.00 - triples

PERSIFLAGE - Lambert,'89, dor. dip. EM. 36"6.25" **Lavender blue with aquamarine eyezone and yellow green throat, nice**.....8.00

PETER AERNE - Lambert,'82, dor. dip. ext. EM. 26"6" **Crimson and scarlet polychrome Unusual Form Crispate** w/green th....7.00 - triples

PILLAR OF FIRE - Lambert,'68, dor. dip. M. 34"8" **Vibrant orange brushed red with red halo, very showy**.....10.00 - fall

PING PONG - Hite,'95R, sev. dip. M. 36"8" **Dark red and yellow Unusual Form Crispate self, an eye-catching flower**.....10.00

PINK ATTRACTION - Brown,'83, sev. dip. EM. 26"5" **BEAUTIFUL soft pink** with yellow-green th, **excellent color clarity**.....7.00 - quads

PINK MONDAY - Sellers,'83, dor. tet. M. 26"5.5" **Flat, full formed, ruffled rose pink self w/strong gr th, a great tet, Btfl**.....7.00 - triples

PINK RAINDANCE - Ned Roberts,'95, dor. dip. fr. noc. EM. 30"6.5" **Pink Unusual Form Variable Crispate** w/yellow throat.....8.00

PINK SUPER SPIDER - Carpenter-Glidden,'82, sev. dip. M. RE. ext. 332"10" **Huge rose & pink UF Pinched Crispate, green eye**..10.00 - fall

PISTOLLERO - Dickerson,'99, dor. dip. EM. RE. 28"7" **Luscious medium pink Unusual Form Crispate w/emerald green th**..10.00 - triples

PLACE D'ETOILE - Lambert,'90, dor. dip. M. 28"9" **Purple self Unusual Form Pinched Crispate** with large green star throat....15.00 - triples

PLANET MAX - Reed,'97,sev.dip.EM.42"7" **Rich dark purple spider self** with lemon throat, R=4.8/1, **Excellent**.....15.00
 PLATINUM PLUS - Peck,'89,dor.tet.M.RE.23"6" **Marvelous, repeating near white self** with green throat.....7.00
 POINSETTIA - Stout,'53,dor.dip.ext.MLa.36"5.5" **Brilliant medium orange red spider w/deeper halo**. Ratio=4.7/1, Historic....7.00 -triples
 POLTERGEIST - Couturier,'98,sev.dip.FR.M.RE.38"7.5" **Ghostly looking UF Cascade in palest pinkish white**, pea gr th.....9.00 - quads
 PONCA BRAVE - Harder,'91,dor.tet.fr.M.28"6" **Red & yellow bicolor w/yel-gr th, sepals dark red, petals yellow flushed red**...7.00
 POOGIE - Peck,'81,dor.tet.M.19"5.5" **Lovely, very ruffled pink self** with greenish-yellow throat, **a good one**.....6.00 - triples
 POP ART - F.Bennett,'89,sev.dip.EM.26"6" **Light rose pink & cream blend** with gr-yel throat, **very pretty, eye-catching**.....7.00 - quads
 POST TIME - Wild,'75,dor.dip.EM.Re.28"5.5" **Very velvety, ruffled, overlapped, ruby red w/lemon-yellow th, round, full**....5.00 - triples
 PRAGUE SPRING - Lambert,'89,dor.dip.M.30"7" **Beautiful flesh and green UF Quilled Crispate w/pistachio throat**.....8.00 - triples
 PRAIRIE SATAN - Marsh,'67,sev.dip.M.26"6.5" **Red bitone w/orange throat, segments curly/horned, UF Variable Crispate**...5.00-quads
 PRAY FOR PEACE - Benz,'89,dor.tet.ext.noc.MLa.30"6.5" **Beautiful, very white tet w/great form, 3"petals, 2"sepals, gr. th.**...8.00
 PRETTY IN PINK - Stamile,'91,dor.tet.fr.EM.27"5.5" **Bright bluish pink self with green throat, very pretty**.....7.00 - triples
 PRIME MINISTER - Munson,'82,dor.tet.fr.M.RE. **Brilliant & gleaming red self** with yellow throat, **an excellent red**.....6.00 - triples
 PRINCE OF PURPLE - Couturier,'93,Hard dor.dip.ext.M.34"5.5" **Dark purple Spider w/cream ribs, dark eye, R=4.4/1**.....8.00 - triples
 PRINCE OF VENICE - Munson,'85,ev.tet.EM.RE.30"5.5" **Broad, smooth, and clear mauve wine blend w/lemon lime throat**....6.00 - triples
 PURPLE ARACHNE - Webster,'84,dor.tet.fr.M.22"7" **Purple Spider w/green throat, doesn't make large fans, R=4.7/1**.....7.00
 PURPLE CORNDANCER - Roberts, Ned,'98,dor.dip.L.20"6" **Beautiful purple bitone UF Twisted Crispate w/etched darker**
 eyezone and sepals that quill and curl into ringlets, blooms when the rest are gone.....15.00 - fall
 PURPLE ODDITY - Lenington,'80,sev.dip.M.ext.30"6" **Violet purple self with green yellow throat, UF Crispate**.....8.00 - fall
 PURPLE MANY FACES - Roberts,Ned,'95,sev.dip.JL.34"8" **Vivid purple UF Pinched/Quilled Crispate w/gr th, BC=22-40**....10.00-triples
 QUAKING ASPEN - Griesbach-Klehm,'79,dor.tet.fr.RE.EM.34"6" **Bright lemon-drop yellow w/olive th, reliable rebloom**.....8.00 - triples
 QUILT PATCH - Maxwell,'65,dor.dip.EM.RE.ext.26"6" **Stunning tan, gold, and yellow w/deep steeple red-brown eye, showy** 8.00
"Racing Stripes"-Benzinger Sdlg.Dor.dip.45"6" **Spidery UFCascade coral-orange-red w/wh ribs, yel-gr th, can bloom 9 wks**....8.00-triples
 RADIANT MOONBEAM - Larch,'78,sev.dip.ML. **Starlike, serene near white** with yellow-green throat, good parent.....8.00 - triples
 RAINBOW TOWERS - Schwarz,'99R,dor.tet.M.64"8" **Five foot tall, huge flowering gold self with gold throat**.....15.00
 RED MONARCH - Pride,'80,dor.tet.M.32"7.5" **Majestic, large rich red self w/deep green th, clumps make a statement**.....8.00 - quads
 RED RAIN - Whitacre,'88,sev.dip.M.noc.38"6.5" **Bright cherry red Spider w/deep red eye, yel-gr th, R=6/1, a favorite**.....10.00 - triples
 RED THRILL - Lenington,'66,sev.dip.M.37"6.5" **Cherry red Spider with huge green throat, parent of RED RAIN, R=4.2/1**....6.00 - triples
 RED TWISTER - Ferguson,'80,dor.tet.M.27"6.25" **Red bitone Unusual Form Variable Crispate, w/gr-gold th, great clumps**....7.00 - quads
 RED VOLUNTEER - Oakes,'86,dor.tet.30"7" **Clear candle red self of beautiful color clarity, attractive and unusual color**.....7.00
 REGAL GIANT - Reinke,'97,sev.dip.MLa.45"8" **Large lavender-purple w/purple eye and green throat, an exotic**.....10.00
 REVOLUTE - Sass,'44,dor.dip.RE.M-L.FR.ext.46"6" **Very spidery historic yellow w/curling segments, Ratio = 3.8/1**.....6.00 - triples
 RIBBON CANDY - Shilling,'59,dor.dip.34"7" **M.Huge spidery yellowish & pink blend, long petaled Exotic w/pink edges**....8.00 - triples
 RIDDLE ME THIS - Schwarz,'04,sev.tet.EM.36"6" **Deep grape jelly purple Unusual Form Variable Crispate, great color**...50.00
 RICHMOND SPIDER - Larch-Branham,'85,dor.dip.M.30"7.5" **Spidery rich pink w/deeper veining & yel. th, great color**.....10.00
 RIGAMAROLE - Lambert,'85,dor.dip.M.noc.24"8" **Brownish maroon UF Variable Crispate w/saffron th, quilled sepals**.....9.00 - triples
 RIGHT ON - Stevens,'85,dor.tet.26"5" **M.Pale flesh with big bright red eyezone, like bright lipstick, pretty standout flower**.....7.00-triples
 RINGS AND THINGS - Warrell,'95R,dor.dip.fr.ext.M.28"6" **Rose pink and coral bitone w/ coral halo & chartreuse th, UF**....10.00 - fall
 ROCKET CITY - Hardy,'68,dor.tet.EM.36"6" **Color carries on this popular, striking orange oldie w/dark burnt orange eye**.....6.00 - quads
 ROCKET SCIENCE - Murphy,'04,dor.dip.RE.ML38"6.5" **UF Quilled curly Crispate, chartreuse yellow w/strong gr th**.....15.00 - triples
 ROCOCO - Biery,'72,dor.dip.ext.M.20"4" **Lovely, larger looking light yellow classic spider w/gr th, R=6.3/1, twirling sepals**.....6.00 - quads
 ROSE PURPLE ODDITY - Lenington,'83,dor.dip.Mla.36"6" **Rosy purple UF Variable Crispate w/cream-gr th, BC=33**.....10.00 - triples
 ROSY LIGHTS - Wilson-Schott,'90R,Hard dor.dip.ext.MLa.40"8.5" **Rose-beige Unusual Form w/deep rose eye**.....10.00-sf/ fall
 ROYAL CHARM - Soules,'89,sev.dip.fr.EM.16"3.5" **Flesh buff w/dazzling wine-grape eyezone & edging, & lime gr heart**....6.00 - clumps
 RUBY HARTMAN - Krekler,'79,dor.dip.E.24" (taller here).5.5" **Very pretty light pink with rose halo and green throat**.....7.00
 RUBY LOCKET - Benz,'01int,dor.tet.EM.30"5" **Round, ruffled ruby red with emerald green throat, fertile, BC=35**.....15.00
 RUBY SPIDER - Stamile,'92,dor.tet.E.34"9" **Huge, UF Spatulate, a magnificent velvety, ruby red, makes a statement**.....9.00 - triples
 RUFFLED BUDS - Sikes,'89,dor.tet.ext.M. **Light orange red with rose tints, faint orange-red, bud appendages look ruffled**...7.00 - quads
 RUFFLED DUDE - Munson,'86R,ev.tet.fr.Em.RE.20"5" **Beautifully ruffled cream-yellow self with chartreuse throat**.....8.00 - triples
 RUSSIAN RHAPSODY - Munson,'74,ev.tet.M.32"6" **+ Excellent plum purple with deeper purple eye, a classic beauty**.....7.00 - quads
 SAMMY - Lewis,'68,dor.dip.ext.EM.RE.38"8" **Light tan pink spider w/lavender edges and green throat, huge**.....8.00 - triples
 SATIN BIRD - Childs,'83,dor.dip.M.RE.28"6" **Violet & blue purple bitone w/smashing purple eyezone & gr. th**.....**Display**
 SCAPE STOPPER - Spalding,'79,sev.dip.ext.EM.24"6.5" **Lovely yellowish pink w/gr th, floriferous, an excellent flower**.....7.00 - quads
 SCARLET GOWN - Bryant,'81,Hard dor.dip.M.38"6" **Lovely copper red blend with prominent green throat**.....7.00 - triples
 SCARLET ORBIT - Gates,'85,ev.tet.E.RE.22"6" **Round and ruffled good scarlet red w/darker halo and chartreuse throat**.....6.00 - quads
 SCARLETT'S WEB - Reed,'96,dor.dip.EM.RE.ext.44"7" **Scarlet red Unusual Form Twisting Crispate, makes a statement**....15.00 - triples
 Schott Spider Sdlg. # 83-W-71 - dor.dip.36"6.5" **P=2",S=1.25"Great spidery red w/chartreuse th, segments can curl nicely**.....7.00 - quads
 SCREAMING DEMON - Branham,'92,dor.dip.MLa.RE.30"7.5" **Remarkable UF Variable Crispate, orange w/orange red halo**....15.00-fall
 SCREAMING YELLOW ZONKERS - Klehm,'92,dor.tet.M.25"6.5" **Huge, wide, ruffled, awesome, screaming yellow self**.....10.00
 SEBASTIAN - Williams,'79,ev.dip.EM.fr.noc.ext.RE.20"5.5" **Vivid light purple w/lime-green throat, reblooms here**.....7.00 - triples
 SEDUCTRESS - Gates,'81,ev.tet?EM.RE.fr.18"5.5" **Beige-lavender bitone, edged purple with halo & green throat, ruffled**.....6.00 - quads
 SELMA LONGLEGS - Herrington,'91-Int.dor.dip.EM.34"9" **Spidery light tangerine brushed cinnamon w/orange throat**.....8.00 - quads
 SEMINOLE WIND - Stamile,'95int.sev.tet.EM.RE.fr.ext.23"6.5" **Deep, rich pink self with green throat, rfl, parent for pinks**....8.00 - triples
 SERENADE - Stout,'37,dor.dip.EM.RE.48"4" **Narrow star, historic, cream & pink bicolor, w/rose eye, UF Pinched Crispate**..7.00 - triples
 SERENE MADONNA - Childs,'73,dor.dip.fr.ext.ML.26"6" **Aptly named lovely near white self with green throat**.....7.00 - triples

SERPENT'S TOOTH – Lambert,'89,dor.dip.M.38"9"**Burgundy UF Variable Crispate** with green-yellow throat.....15.00
SHERRY FAIR - Peck,'79,Hard dor.tet.M.24"6"**Beautifully colored deeper rose pink self w/green throat, a favorite**.....8.00
SHOCKWAVE - Brown,'78,sev.tet.E.RE.ext.30"6"**Wide petaled, gorgeous yellow gold self** with gold throat, **a classic**.....7.00
SHORT CIRCUIT - Brooks,'94,sev.tet.EM.RE.28"6"**Heavily ruffled, recurved orange w/maroon eyezone**, orange th, **nice**.....7.00 - triples
SHUFFLE THE DECK – Shooter,'03,sev.dip.ext.noc.M.52"9"**Reddish purple w/lav-cream edge, starburst green throat, UF**.....35.00 - fall
SILENT SENTRY - J.Salter,'93,sev.tet.Em.24"5.5"**Rich violet purple with triangular yellow pattern eye** and green throat.....8.00 – fall
SILOAM DAN TAU – Henry,'83,dor.dip.M.24"5.5"**Pale rose self with green throat, faint halo, & much ruffling, btfl**.....7.00
SILOAM FRENCH DOLL - Henry,'79,dor.dip.ext.M.16"3.5"**Overlapped, very ruffled pink w/deep rose eyezone**, gr th.....7.00 - triples
SILOAM JIM COOPER - Henry,'83,dor.dip.ext.EM.16"3.5"**Very good, round, ruffled red** with deeper eye & gr. th, **choice**.....6.00 - quads
SILOAM MAMA - Henry,'83,dor.dip.fr.ext.EM.24"5.75"**Beautiful, rounded, ruffled yellow self w/gr. th, excellent form**.....7.00 - triples
SILVER DROPS - Russell,'57,Hardy ev.dip.E.RE.noc.18"6"**Greenish yellow crispate spider, R=4.6/1, sepals quilled/hooked**..6.00 - triples
SILVER ICE - Munson,'84,sev.tet.fr.EM.RE.**Broadly formed pale ice pink blushed palest lilac**, cream th, **serenely gorgeous**...8.00
SINCERE PRAYER - Able,'68,ev.dip.Em.ext.20"7"**Marvelous cream beige w/big, splashy purple eyezone & gr-yel. th**.....10.00 - fall
SIR MORDRED - Webster,'92,dor.tet.M.24"5.5"**Well branched, ruffled, slightly recurved, black-red**.....6.00 - triples
SISTER MILDRED - Spalding-Guillory,'85,ev.dip.ext.M.22"5.5"**Very pretty, bright pink w/deep pink halo & green th**.....7.00 - quads
SISTER SPIDER - Powell,'84,dor.tet.fr.noc.ext.M.RE.33"8"**Huge spidery yellow tet** with green throat.....7.00 - triples
SKY OVER SCHUYLER - Reed,'07,dor.dip.EM.36"6"**Unusual Form Crispate in gorgeous lavender w/chartreuse throat**....50.00
SLENDER LADY - Crandall,'91,ev.dip.EM.ext.29"7"**Yellow green spider w/faint cinnamon eyezone, very gr. th, R=5/1, btfl**.....9.00-triples
SMITH BROTHERS - Carr,'93,dor.tet.M.RE.30"5"**Very good near black-red** with gold green throat.....7.00- triples
SMOKE RINGS - Webster,'80,dor.tet.fr.M.22"6"**Striking melon pink w/deep purple eyezone & chartreuse th, a showstopper**.....9.00 – 3's
SNOWBALL – Benson,'67sev.dip.M.RE.45"4"**Very round, recurved light creamy white excellent oldie**.....8.00
SNOWY APPARITION - Childs,'80,dor.tet.EM.RE.FR.30"6.5"**Very nice large near white self** with green throat.....7.00 - quads
SOLAR POWER - Gates,'81,sev.tet.E.RE.fr.34"7"**Darker brilliant orange self with hot glow and yel-gr. th, has PIZZAZZ**.....8.00
SOMBRE ROY WAY - Reckamp,'73,dor.tet.M.RE.26"5.5"**Splendid, round, flat orange-pink, a classic w/good, glowing color**...7.00 - triples
SORAYA SELINE - Dickerson,'98R,dor.dip.M.RE.**Red spider variant, repeats 3-4 times per season**, green throat, R=4.5/1...12.00
SOUTH SEAS - Moldovan,'93,dor.tet.fr.noc.ext.M.RE.30"5.5"**Hot tangerine coral w/deeper red coral band, yel-gr.th, BTFL**..8.00 - triples
SOVEREIGN QUEEN - Munson,'84,sev.tet.fr.M.RE.30"6"**Bluish lavender self with cream throat, fluted, gorgeous favorite**....7.00 - triples
SPANISH FANDANGO - Wallace,'82,dor.dip.fr.M.26"8.5"**Elegant, spidery apricot yellow Exotic**, rose tipped petals & gr th...7.00 - triples
SPELLBINDER - Baker,'76,dor.tet.ML.fr.ext.34"6.5"**Brilliant tangerine-gold self with green throat, commands attention**.....7.00 - quads
SPIDER BREEDER - Miller,'78,dor.dip.ML.34"10"**Deep lemon yellow spatulate Spider, fertile both ways**, Ratio = 4.8/1....6.00 - quads
SPIDERLING - Wheeler,'81,dor.dip.E.28"7.5"**Very spidery Exotic Form medium red self w/green-yellow throat, tall here**....7.00 - clumps
SPIDER MIRACLE - Hendricks,'87,dor.dip.M.32"8.5"**Huge, lovely, well formed spidery yellow-green flower w/green th**.....7.00 - quads
SPIDER SPIEL - Hart,'79,dor.dip.EM.RE.ext.24"8"**Burnt orange bitone Classic Spider**, w/red-amber eye, gr th, Ratio= 6:1.....7.00 - quads
SPIDER WEB - Tanner,'76,ev.dip.20"8"-11"**IMMENSE YELLOW SELF, SMASHING Unusual Form Crispate**, R=3.6/1...8.00 - quads
SPINDAZZLE - Wilson,'83,sev.dip.ext.M.26"7"**Coppery gold veined red bicolor with red tips, baroque pinwheel shaped**.....8.00 - quads
SPINDAZZLE - TET FORM of above, R=4.4/1, have sdls with tet pod parents.....20.00
SPINMASTER – Schwarz,2000int.dor.dip.EM.37"7"**Yellow-green UF Pinched Crispate** with yellow green th, **btfl. form**.....13.00 - triples
SPIRAL CHARMER - Dickson-Crandall,'84R,sev.dip.M.36"6.5"**Cream white Spider w/pink cast, yel-gr. th. R=5/1**.....10.00
SPIRAL SUN – Shooter,'09,sev.dip.noc.fr.ML.ext.41"7.5"**Lime yellow UF Quilled Crispate polytepal w/deep green th, curls**..100.00 - fall
SPIRITUAL CORRIDOR - C. Hanson,'92R,sev.tet.fr.EM.25"6"**Beautiful orchid lavender blend** with chartreuse green throat....10.00
STACK THE DECK – Shooter,'98,dor.dip.M.re.32"7"**Reddish purple with purple eyezone, cream edges, & green throat**.....12.00 - fall
STAR SPANGLED - Lambert,'67,Hardy ev.dip.FR.E.24"9"**Very pale gray-pink Classic Spider Star**, R = 5.4/1.....8.00 - triples
STOPLIGHT - Childs,'54,dor.dip.M.36"7"**Bright, medium red CLASSIC SPIDER**, [Ratio = 5.1:1], with yellow-green th.....6.00 - clumps
STRAWBERRY CANDY - Stamile,'90,sev.tet.ext.EM.RE.26"4.5"**Strawberry pink w/lovely rose-red eye & red picotee edge**..7.00 - triples
STRAWBERRY ROSE - Peck,'82,dor.tet.M.27"6.5"**Highly ruffled rose-pink self** with yellow-green throat.....7.00 - quads
STRAWBERRY VELVET - Kennedy,R'72,dor.dip.M.26"5"**Rose red bitone with light yellow throat, marvelous color**.....7.00 – quads
STRUTTER'S BALL – Moldovan,'86,dor.tet.ext.M.28"6"**Nicely formed rich deep blue-purple self, very good**.....10.00 - fall
"Stu's Old Pink Spider" - dor.dip.43"5.5"**Muted rose pink Classic Spider** with yellow & deep green throat, Ratio=5.07/1.....7.00 - triples
SUGAR CANDY - Wild,'75,dor.dip.M.34"5"**Unique colored fuchsia or deep bluish orchid, unusual & attractive color**.....6.00 - quads
SUGARLOAF MOUNTAIN - Lake,'65R,dor.dip.fr.M.RE.36"8"**Huge pink melon blend crispata** with chartreuse throat.....7.00 - quads
SUMMER STAR - Santa-Lucia,'00,dor.dip.EM.RE.42"8"**Light gold UF Twisting Crispate**, BC=24, curls, fast increase, **great**...8.00-quads
SUNNY SON - Love,'94R,sev.dip.ext.M.38"8"**Unusual Form Quilled Crispate, a yellow, gold, and cream blend w/gr. th**.....8.00 – quads
SUNRAY BRILLIANCE – Hall,'59,dor.dip.M.36"7"**Golden and brownish UF Twisted Crispate**.....6.00 - triples
SUNSET MAGIC - Monkhouse-Smith,'68,dor.dip.ext.EM.30"7"**Flamboyant bright reddish copper Exotic Form w/gold eye,gr.th**...8.00
SUPER PURPLE - Dove,'81,sev.dip.FR.ext.M.RE.27"5.5"**Very good, ruffled, lovely, deep rich purple self w/green throat**.....8.00
SURPRISINGLY PINK - Pierce,'83,dor.dip.EM.18"6"**Excellent and lovely pink blend** with green throat.....8.00 - triples
SWEETBRIAR - Nesmith,'38,dor.dip.M.40"5.5"**Baroque, spidery exotic brick red with yellow midribs, historic**.....7.00 - triples
SWEET CHARLOTTE - Warrell,'86,dor.dip.fr.ext.EM.36"7"**Light coral pink UF Pinched Crispate w/lavender ribs & gr th**...8.00 - triples
SWIRLING WATER - Carpenter,'83,sev.dip.EM.22"6.5"**Gorgeous, aptly named purple w/cream white splash, gr th**.....6.00 - quads
TACO TWISTER - Ned Roberts,'97,sev.dip.fr.noc.28"7.5"**Marvelous twisting creamy yellow spider w/gr. th, R = 4.35/1**...15.00 - triples
TAIL FEATHERS - McRae,'90,dor.dip.M.RE.ext.20"7"**Bright red Unusual Form Twisting Crispate w/large yel center, gr th**...7.00- quads
TANGLED WEB - Wilson-Leichhardt,'93.Dor.dip.M.34"7"**Spider looking purple exotic, a self with wide yel-green throat**.....8.00
TANZONITE – Lambert,'83,dor.dip.EM.25"6"**Magenta with lilac blue halo & yellow green throat, aptly named**.....10.00
TARUGA - Stout,'41,ev.dip.ext.EM.RE.36" 7"**Dramatic yellow Unusual Form Pinched Crispate** with halo, **historic**, pretty.....7.00 - triples
TENNESSEE FLYCATCHER – Harris-Reinke,'93,dor.dip.fr.EM.34"10"**Light lavender spider w/burgundy eye, R=5.6/1**.....8.00 - fall

THE ELEPHANT - Nesmith, '53, sev. dip. M.30"7" **Large Unusual Form Cascade, dark yellow**, good, rarely listed, historic.....8.00 - triples
THIRD WITCH - Reed, '03, dor. dip. ext. M.44"6" **Black red Spider with slightly darker eye and green throat**, R=4/4/1.....10.00 - triples
TIFFANY JEANE - Childs, '81, dor. dip. ext. fr. M.RE.24"6" **Scrumptious blue purple self with green throat**.....7.00
TIGEREYE SPIDER - Reed, '95, dor. dip. EM.RE. ext.34"6" **Superb bronze-orange spider w/bold black-orange eye, R=5/7/1**.....10.00 - triples
TIGER'S EYE - J. Carpenter, '90, dor. dip. M.RE.FR.6.5" **Huge gold with smashing dark maroon eyezone and yellow-green th**.....10.00
TOO MARVELOUS - Sellers, '82, dor. dip. M.24"5" **Beautifully formed creamy flower w/pink highlights, green th, gorgeous**.....7.00 - triples
TORPOINT - Fischer, '68, dor. dip. L. ext.36"5" **Capuchine buff with pink midribs and yellow throat, historic**.....8.00
TRADE LAST - Sikes, '88, dor. dip. ext. M.24"4.75" **Luscious deep pink blend with yel-green th, creped, gorgeous in clumps**.....7.00 - triples
TRAHLYTA - Childs, '83, dor. dip. EM.RE. vfr.30"6.5" **Grayed violet w/dark purple eyezone and green throat, marked well**.....8.00 - triples
TREEDA - Branham, '83, dor. dip. ML.28"6" **Greenish yellow Unusual Form Pinched Crispate w/green ribs & very gr th**.....8.00
Trimmer Sdlg. # 97-104, sev. tet.36"6" **Hardy & very pod fertile sib to WILD HORSES, Cream with smashing purple eye**.....10.00-triples
TROPICAL DEPRESSION - Reed, '96R, dor. dip. M.46"8" **Rosy grape spider w/dark purple eyezone & lemon throat, R= 5.5/1**.....10.00-triples
TROUBADOUR - Claar-Parry, '59, dor. dip. ext. M.36" **Spider, baroque, light troubadour red w/edges penciled yellow, gr th**.....6.00 - quads
TRUE PEACE - Benz '90, sev. tet. ext. noc. M.22"5" **Excellent, round, ruffled sparkling near white self with green throat**.....8.00 - triples
TRY IT - Childs, '73, dor. tet. EM.RE.26"6" **Breathtaking red blend w/showy white edges & green throat**.....Single Fans.....8.00 - fall
TWILIGHT STAR - Whitacre, '88, Hard dor. dip. M.28"7" **Long petaled lavender-beige star w/mauve eye & pale yellow th**.....8.00 - triples
TWISTED SISTER - Schwarz, '01 int, dor. tet. E.30"8" **Pale lavender rose w/light green throat, UF Variable Crispate**.....25.00
TWIST OF LEMON - Brooks, '85, dor. tet. ext. EM.33"7" **Striking lemon yellow UF Crispate w/gr. th, segments twist & curl**.....8.00
TYLWYTH TEG - Whitacre, '88, sev. dip. M.40"8" **Spiderish pale cream polychrome w/lavender ribs & pale gold th, fertile**.....7.00-triples
UNTAMED - Terry, '71, dor. dip. EM.RE. fr. ext.36"8" **Spidery Bright, Chinese red self with chartreuse throat, curling segments**.....7.00 - quads
UPLAND - Sellers, '78, dor. dip. M.28"5" **VERY PRETTY PINK with green throat, good, reliable repeat for me**.....7.00 - quads
ULTRAVIOLET - Lambert, '84, dor. dip. M.RE.26"6" **Rich dark violet with blue halo & lime-green throat**.....8.00 - fall
VALENTINE DAY - Pride, '80, dor. tet. M.27"6.5" **Gorgeous cerise red self of excellent color clarity w/ pale yellow throat**.....10.00
VALENTINE LACE - Krekler, '67, dor. dip. EE.36"6" **Pale lavender & cream blend crispata w/yel. th, pinched petals**.....7.00 - quads
VALIANT - Cook, '43, dor. dip. M. ext.42"6" **Ruffled UF Pinched Crispate star, strong, glowing yellow-orange-gold self**.....7.00 - quads
VALLEY MONSTER - Powell, '84, dor. tet. fr. noc. M.RE.33"9" **Huge, spidery yellow tet with gr. th, and rust brushings**.....8.00 - quads
VAMPIRE L'ESTAT - Lambert-Whitacre, '90, sev. dip. fr. noc. ext.31"9" **Deep violet UF Spatulate, quilled sepals, grey-mauve eye**...25.00
VEILED ORGANDY - Reckamp, '72, dor. tet. M.30"6.5" **Pinkish apricot overlaid gold w/yel- gr. th, ruffled, gorgeous art shade**...7.00-quads
VELVET RIBBONS - Stamile, '02, ev. et. EM.RE.44"11" **Violet black tet spider with green throat, R=4.67/1, excellent**.....25.00 - fall
VENETIAN LACE - Yancy, '83, sev. dip. M.RE.30"6" **Gorgeous lavender blend with cream green throat, exceptionally lovely**.....10.00
VERA BIAGLOW - Moldovan, '86, dor. tet. ext. ML.28"6" **Richly colored rose pink with lemon green throat, a great flower**.....8.00 - quads
VESUVIAN - Benz, '92, dor. tet. ext. M.30"5.5" **Dazzling, heavily ruffled, sunfast velvety ruby red with green throat**.....9.00 - quads
VIEWPOINT - Lambert, '65, dor. dip. M.30"4.5" **Lavender bitone w/wine red eyezone running to petal tips, white edges**.....8.00 - triples
VINTAGE WINE - Munson, '76, Semi-dor. tet. E.32"6" **Gorgeous purple with chalky plum eyezone, very pretty favorite**.....7.00 - quads
VIRACocha - Roberts, '76, dor. tet. EM. fr.25"7" **Lush exotic tangerine with an orange throat, BC = 24, a standout flower**.....6.00-triples
VIVID HEART - Kirby, '94R, dor. dip. EM.30"7" **Brilliant, neon red self with green throat, an eye catcher**.....8.00 - quads
WAKE UP AMERICA - Schwarz, '04, dor. tet. E.32"4.5" **Intense lemon-lime yellow UF Variable Crispate, strong green th**....40.00
WALTER'S TANGO - Marx-Hensley '06, dor. dip. fr. M.26"5" **Brilliant, orange UF Pinched Crispate w/startling red eye, yel/gr. th**.....10.00
WAR MARCH - Munson, '83, dor. tet. E.RE.30"6.5" **Sunfast rich light burgundy to claret red w/green-gold th, great color**.....7.00 - quads
WATCHYL CYBER SPIDER - Kreger, '95R, dor. dip. M.30"14" **Huge pale yellow Classic Spider w/red eyezone & gr th, R=5.6/1**.....10.00- 3's
WATCHYL DANCING SPIDER - Kreger, '96, dor. dip. M.36"13" **HUGE orange & gold classic spider w/red eye, R=6.5/1**.....10.00 - triples
WATERMELON MAN - Whitacre, '90, dor. dip. M.17"4.5" **Spidery star, velvet black-red w/chrome yellow th**.....6.00 - quads
WEBMASTER - Betzler, '00R, dor. dip. fr. M.27"6.5" **Purple and lavender bitone Unusual Form with white edge & gr throat**.....15.00-triples
WEBSTER'S PINK WONDER - Webster-Cobb, '03, sev. tet. M.34"13" **Huge pink UF Variable Crispate with green throat**.....35.00 - fall
Webster Tet Sdlg. # TRS-ED-3923, dor. tet.38"8" **Bright yellow Unusual Form Pinched Crispate, good parent, pod fertile**.....8.00 - fall
WE THANK THEE - Yancey, '79, sev. dip. M.26"6" **Incredibly gorgeous light lavender with green throat**.....7.00
WHAT NERVE - Sellers, '00, dor. tet. M.RE.26"5" **Smashing burnt orange with striking near black eyezone and green throat**....15.00 - fall
WHIPLASH - Bryant, '68, dor. dip. ext. fr. M.32"8" **Spidery medium yellow-orange with wine red eyezone**.....6.00 - quads
WHIRLING FURY - Parker, '69, sev. dip. EM.26"6" **Dramatic UF Variable Crispate, spidery green-yellow w/strong gr th**.....7.00 - triples
WHOOPEREE - Gates, '88, ev. tet. E.RE. fr.24"6.5" **Bright rose red with slightly darker eyezone and chalky green throat**.....7.00 - triples
WILD HORSES - Trimmer, '99R, ev. tet. E.RE.37"7" **Cream with standout black purple eyezone and yel-green throat**.....10.00 - triples
WILLIE BELLE - Childs, '83, dor. dip. M.28"6.5" **Decorative pink UF Variable Crispate w/purple eyezone**.....12.00 - fall
WILSON SPIDER - Oakes, '88, dor. dip. M.28"7" **Purple bitone Spider w/white eyezone, chartreuse throat, Ratio=4.6/1**.....8.00
WINDFRILLS - Tarrant, '79, Ev. dip. fr. EM.RE.34"7" **Spidery looking pink Unusual Form Variable Crispate w/yel-gr throat**....7.00 - triples
WIRED - Murphy, '06, dor. dip. M.42"8" **Brilliant cherry red Classic Spider w/white edges & gr th, R=7/1, very narrow**.....75.00
WOODSIDE ROMANCE - Apps, '96, dor. dip. M. fr.27"5" **Gorgeous electric rose self with yellow-green throat, BC =34, BTFL**...10.00
WOODSIDE RUBY - Apps, '90, sev. dip. M.34"4.5" **Glowing ruby red self w/green th, good bud count, good increase**.....7.00 - quads
WUTHERING HEIGHTS - Lambert, '69, Hardy ev. dip. fr. ext.30"7.25" **Burmese ruby with black overlay & large yel-gr th**.....10.00
YABBA DABBA DOO - Ra Hansen, '93, sev. dip. RE.L. noc. ext. .30"10" **Medium purple spider w/large chart. th, R = 4.35/1**.....10.00
YA YA GIRL - Roberts, '03, sev. dip. ext. EM.RE.46"8" **Light Lavender bitone UF Cascade with green throat**.....15.00
YAZOO DELTA - Smith, WH, '61, Hardy ev. dip. ext. M.36"7" **Bright golden yellow UF Pinched Crispate, great flower**.....8.00-sf/fall
YELLOW MAMMOTH - Powell, '85, dor. tet. ext. noc. ffr. M.RE.36"10" **Huge spidery lemon yellow tet w/green throat**.....8.00
YESTERDAY MEMORIES - Spalding, '76, ev. dip. ext. M.19"6.6" **Ruffled beautifully colored deep pink self w/large gr. th**.....8.00 - triples
ZELLA VIRGINIA - Kropf, '83, dor. dip. fr. ext. M.RE.24"5.5" **Marvelous double hose in hose, creped, cantaloupe self**.....10.00
ZIP BOOM BAH - Dickerson '97, dor. dip. EM.RE.28"6" **Spidery pink with red eyezone and green throat, light petal midribs**.....15.00

AFFIX EXTRA PAGE IF MORE SPACE IS NEEDED

TOTAL PLANTS or Sub-total _____
TURN PAGE, PLEASE

COST OF TOTAL PLANTS FROM PREVIOUS PAGE.....

PENNSYLVANIA SALES TAX (PA. RESIDENTS ONLY) - 6% of above line.....

SHIPPING AND HANDLING CHARGES

NUMBER OF PLANTS PRIORITY MAIL

1 to 2 plants.....\$7.00	6 to 9 plants.....\$9.00
3 to 5 plants.....\$8.00	10 plants.....\$10.00
Over 10 plants.....\$10.00 + 50 cents per each plant over 10.	

IMPORTANT: TWO FANS OF ONE PLANT TO BE SHIPPED ARE CONSIDERED AS ONE SHIPPING FAN. ADD UP THE TOTAL NUMBER OF SINGLE FANS YOU EXPECT TO GET AND DIVIDE BY TWO. EACH TWO FANS COUNT AS ONE SHIPPING FAN. COUNT QUADS AS 2 FANS AND CLUMPS AS 3 FANS PLEASE. OTHERWISE, ORDERS CANNOT BE PROCESSED. THANKS.

TOTAL PRIORITY MAIL.....[SPRING SHIPPING]....

TOTAL PRIORITY MAIL.....[FALL SHIPPING].....

TOTAL AMOUNT ENCLOSED.....

SUBSTITUTION ALTERNATES:

I HAVE GIVEN PERMISSION TO SUBSTITUTE AND WISH TO RECEIVE A BONUS.

Bonus plants are not given without your permission to substitute and a long list of substitutes. Affix list to order.

YES _____ NO _____

Please read the conditions under which bonus plants are given on page 1.

GUARANTEE: Our plants are state inspected. It is the responsibility of Hickory Hill Gardens to supply true to name varieties in good condition. This is the limit of our responsibility. If plants are not satisfactory upon arrival, return to us immediately without removing the plant labels. We are not responsible for delays in shipment as result of the shipping choice you chose.

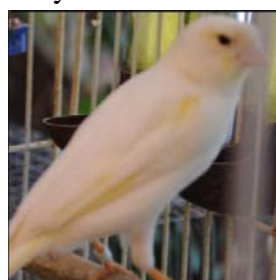
Hickory Hill Gardens Singing Canaries

Hickory Hill Gardens is also the home of fine singing canaries. We are breeding and raising several types:

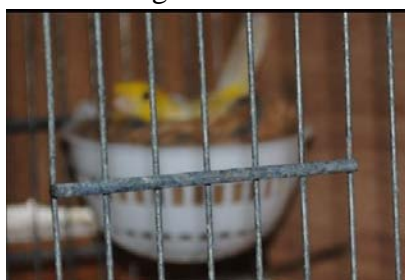
- 1) Hickory Hill Gardens Canaries in yellow, white, & red factor – These sing open throated cheerful middle & upper range tours with a variety of rolls , trills, etc. They are enthusiastic strong moderately loud singers.
- 2) Waterslager Singers in yellow – These unique singers produce middle to lower range sounds and many of the notes sound watery or bubbly. Their song is rich, very variable, & strong, but not generally as loud as the Hickory Hill Gardens singers.
- 3) Dominant White singers – These are Hickory Hill Garden Singers so the song is the same.
- 4) Recessive White singers – These are Hickory Hill Garden Singers so the song is the same.
- 5) Spanish Timbrado singers –This strain was just developed in the 1940's. They are only several generations from the original wild canary. They are middle and upper range singers with gorgeous tones, variable timbers, brilliant notes, and many variations. These are a rich greenish or cinnamon color.



Hickory Hill Gardens singer in song



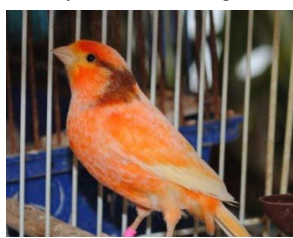
Dominant White Canary



Waterslager Hen incubating eggs



Recessive White Variegated Canary



Hickory Hill Gardens Red Factor



Spanish Timbrado Canary



Hickory Hill Gardens Singers



Note – female canaries don't sing.

Prices for all Male Singing Canaries.....\$90.00 each

Prices for Female Canaries.....\$15.00 each

Shipping – We cannot ship canaries by USPS, FedEx, UPS, etc. They can be shipped by air, but the price of shipping is close to the cost of the bird unless shipped in bulk lots.

Single birds may be ordered and picked up at Hickory Hill Gardens. Pennsylvania sales tax of 6% applies.

You may use the Order Blank on the previous page to order. Be sure to specify which type you wish to order.